

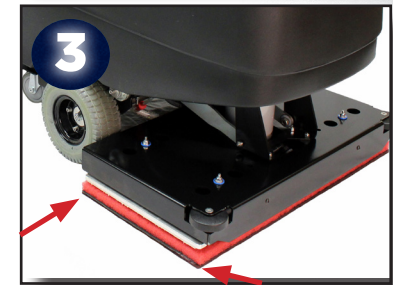
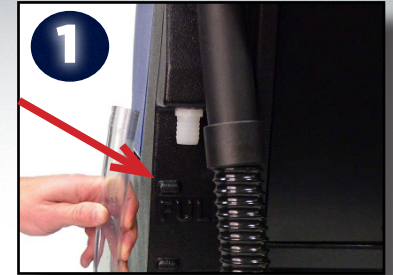
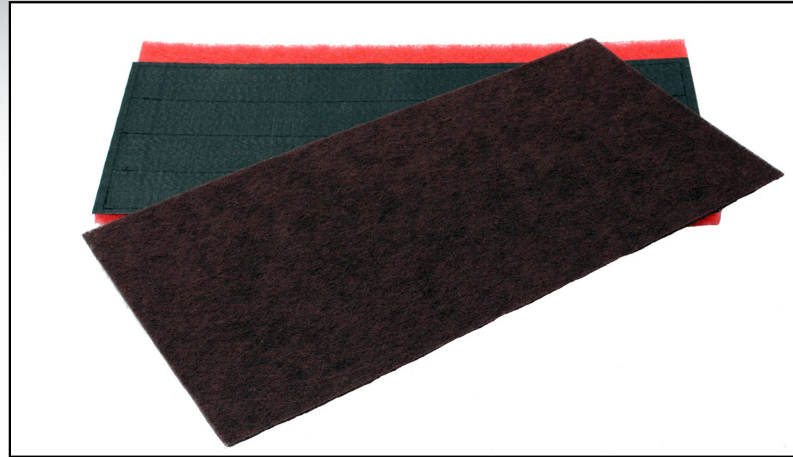
REMOVE MAXX DURABLE, GLOSS-TEK, AND OTHER FINISHES WITH JUST WATER!

Required Accessories:

- Red scrubbing pad (used as a backer pad)
- Velcro pad retainer
 - Part # 855909 for 20-inch
 - Part # 875906 for 28-inch
- Maroon surface prep pads

Machine Set Up:

1. Fill the solution tank with clean water
2. Attach the red scrubbing (backer) pad to the maroon surface prep pad using the velcro pad retainer and lay the assembly on the floor with the maroon pad on the bottom
3. Lower the scrub head onto the pad assembly and ensure proper alignment as shown
4. Set the down pressure to the shighest position
5. Set the water flow to midrange and adjust to maximize finish removal and rinsing while using the least amount of water
6. Adjust machine speed to your individual project requirement



For more information visit us online at pacificfloorcare.com

PACIFIC
FLOORCARE

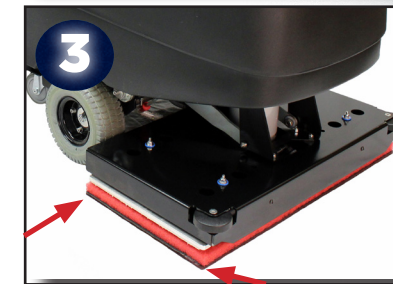
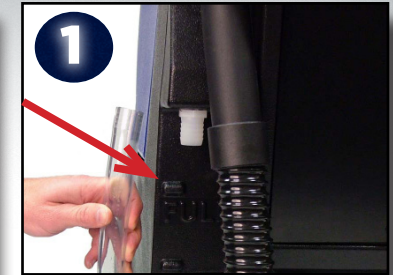
RETIRE MAXX DURABLE, GLOSS-TEK Y OTROS ACABADOS CON SOLO AGUA!

Accesorios requeridos:

- Almohadilla de fregado roja (utilizada como almohadilla de respaldo)
- Retenedor de la almohadilla de velcro
Parte # 855909 para 20 pulgadas
Parte # 875906 para 28 pulgadas
- Almohadillas de preparación de superficie marrón

Configuración de la máquina:

1. Llene el tanque de solución con agua limpia
2. Conecte la almohadilla de limpieza roja (respaldo) a la almohadilla de preparación de la superficie granate utilizando la almohadilla de velcro retenedor y coloque el conjunto en el piso con el cojín granate en la parte inferior
3. Baje el cabezal de fregado sobre el conjunto de la almohadilla y asegúrese de que la alineación sea correcta como se muestra
4. Ajuste la presión hacia abajo a la posición más alta
5. Establezca el flujo de agua a rango medio y ajuste para maximizar la eliminación del acabado y el enjuague mientras usa la menor cantidad de agua
6. Ajustar la velocidad de la máquina a los requisitos de su proyecto individual



S-28

S-20



PACIFIC
FLOORCARE



Para obtener más información, visítenos en línea en pacificfloorcare.com



Whether replacing wear items, performing scheduled maintenance, or coordinating unscheduled warranty work, at some point during the life of your machine there will be a service requirement. We want to minimize your down time by identifying an Authorized Service Center *before* the need arises. Here is how it works:

1. Ask your Distributor or Pacific Floorcare Sales Representative to identify your service model and select a Pacific Floorcare Authorized Service Center.
2. Use a marker and write the Authorized Service Provider's contact information on the service decal provided above.
3. Place the service decal on a clean, flat surface (preferably metal) where it will be visible when needed.
4. Apply the clear protective film over the service decal.

Only a Pacific Floorcare Authorized Service Center with a written factory agreement is entitled to make warranty repairs to Pacific Floorcare equipment. With the Service Provider already identified you can rest assured that assistance is always just a phone call away.

For more information regarding warranty coverage, refer to your machine's Parts and Operating Manual.

PACIFIC FLOORCARE®

S-SERIES MID-SIZE AUTO SCRUBBER QUICK-START GUIDE

This Guide is intended for quick, new machine preparation only and does not replace the S-Series Mid-Size Auto Scrubber Operation & Parts Manual included with this machine. Before using the machine, read the Operation & Parts Manual thoroughly to ensure proper use and operator safety.

1. Open recovery tank lid to locate the bromine puck pack shipped in the debris tray. Install one puck in the holder. Store the remaining four pucks for future use.



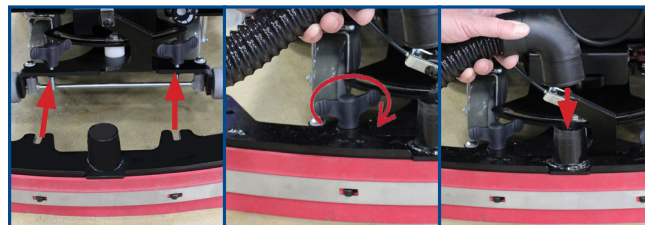
2. Fill solution tank with water either via hose fill port, front fill location (after removing strainer) or auto-off fill assembly (if equipped).



3. Add detergent to solution tank via the front fill location (after removing strainer) or using chemical injection assembly (if equipped).



4. Attach squeegee assembly.



5. Attach your cleaning tool.



Pacific Floorcare

Autoscrubber Demonstration & Installation Checklist



Refer to the Operating Manual prior to and during the discussions listed below to ensure the most current information is presented. Manuals can always be located at: www.pacificfloorcare.com/manuals

- *(install only) Check in with the Point of Contact provided on the Installation Request Form or the site supervisor**
 - Explain that you were dispatched on behalf of Pacific Floorcare to install their new machine.
 - Determine who will be authorized to sign off on the installation checklist when completed.
- *(install only) Inspect the carton and pallet for freight damage**
 - If damage is discovered, take photographs and contact Pacific Floorcare.
 - Review the safety information in the product manual.
 - Find the section titled "Unpacking the Machine".
- Unpack the machine in accordance with the instructions & install the following parts**
 - Pad drivers, pads, & brushes
 - Squeegee assembly
 - Bromine puck (*S-28/S-32 models only if equipped*)
- Test the machine**
 - Top wet lead acid batteries off with distilled water - use HydroLink pump if equipped
 - Perform the "CLEANING THE BATTERYSHIELD® SENSOR LIGHT PIPE" procedure to verify proper operation
 - Fill the solution tank with water
 - Test the "PAD AND BRUSH REMOVAL AND INSTALLATION" procedures 3-5 times (*not applicable on orbital machines*)
- Pre-Use Activities**
 - The safety information in the manual
 - Transportation and tie-down of machine
 - Battery type
 - BatteryShield® (*if equipped - mention the scrub deck disabling feature and the QR code*)
 - Trojan HydroLink® (*if equipped- mention simplicity, safety of closed system, and expect 1/2 gallon of water when servicing*)
 - Charger indicator lights
 - Best practices for battery charging based on anticipated usage
 - Solution filter inspection and cleaning
 - Solution flow control
 - Front and rear solution fill ports (*emphasize clean water, no debris, and point out the strainer*)
 - Demonstrate solution tank drain and flush
- Operation**
 - QR codes (*set up smart phone if necessary*), the 1-2-3 Easy Operation graphic, and the simplicity of the control panel
 - Forward and reverse operation (*not applicable on Pad Assist Machines*)
 - Scrub deck setup and operation (*advise on best practices for down-pressure based on anticipated usage*)
 - Mighty-Lok® scrub deck face storage & protection (*orbital machines only*)
 - Easy recovery tank cleaning and storage (*clean the stainless mesh fliter/float and lid gasket*)
 - Squeegee assembly breakway design, removal, cleaning, inspection, 4 side blade rotation, and installation
- Familiarize the supervisor with the following**
 - Warranty policy and procedure
 - Authorized service provider (*fill out and install the service decal*)
 - Recommended maintenance & program maintenance

Next page >

