

PRO 3

Portable Extractor/Spotter

INTRODUCTION

OPERATING & MAINTENANCE INSTRUCTIONS

READ THIS BOOK

This operator's book has important information for the use and safe operation of this machine. Read this book carefully before starting the machine. Keep this book and tell all operators to read the book. If you do not follow the instructions, you can cause an injury or damage equipment, furniture or buildings.

For new books write to:

Pacific Steamex, Inc.
2259 S. Sheridan
Muskegon, MI 49442-6252

Carefully inspect all components to ensure that there is no concealed freight damage. If such damage is discovered, file a "CONCEALED DAMAGE REPORT" immediately with the delivering carrier.

The contents of this manual are based on the latest product information available at the time of publication. Pacific Steamex reserves the right to make changes or improvements to its machines without notice.

FOR YOUR CONVENIENCE, RECORD THE FOLLOWING IMPORTANT INFORMATION:

MODEL _____

SERIAL NUMBER _____

PART NUMBER _____

DATE PURCHASED _____

IMPORTANT SAFETY INSTRUCTIONS

READ AND UNDERSTAND ALL WARNINGS AND INSTRUCTIONS BEFORE USING THIS APPLIANCE!

WARNING! To reduce the risk of fire, electric shock, or injury:

1. Unplug from outlet when not in use and before servicing.
2. Do not use outdoors. Protect the machine from rain.
3. Do not allow to be used as a toy. Close attention is necessary when used by or near children.
4. Use only as described in this manual.
5. Never use this machine to pick up volatile or explosive materials!
6. Do not use this machine for pick up of dust or dry debris.
7. Do not use with damaged cord or plug. If appliance should not work as it should, has been dropped or damaged, left outdoors, or dropped into water, return it to service center.
8. Do not pull or carry by cord, use cord as handle, close a door on cord or pull cord around sharp edges or corners. Do not run appliance over cord. Keep cord away from heated surfaces.
9. Do not unplug by pulling on cord. To unplug, grasp the plug, not the cord
10. Do not handle plug or appliance with wet hands. Do not immerse. Keep the machine in a dry building.
11. Do not put any objects into opening. Do not use with any opening blocked: keep free of dust, lint, hair and anything that may reduce airflow.
12. Keep hair, loose clothing, fingers and all parts of the body away from openings and moving parts.
13. Turn off all controls before unplugging.
14. Do not use in areas where flammable or combustible liquids such as gasoline may be present.
15. Connect to a properly grounded outlet only.
16. Do not use water that is hotter than 82°C (180°F).
17. To prevent damage to the solution system, do not store in freezing temperatures without proper maintenance.

Grounding Instructions

This machine must be grounded. If it should malfunction or break down, grounding provides a path of least resistance for electric current to reduce the risk of electric shock. This machine is equipped with a cord having an equipment-grounding conductor and grounding plug. The plug must be inserted into an appropriate outlet that is properly installed and grounded in accordance with all local codes and ordinances.

WARNING - Improper connection of the equipment-grounding conductor can result in a risk of electric shock. Check with a qualified electrician or service person if you are in doubt as to whether the outlet is properly grounded. Do not modify the plug provided with the machine - if it will not fit the outlet, have a proper outlet installed by a qualified electrician.

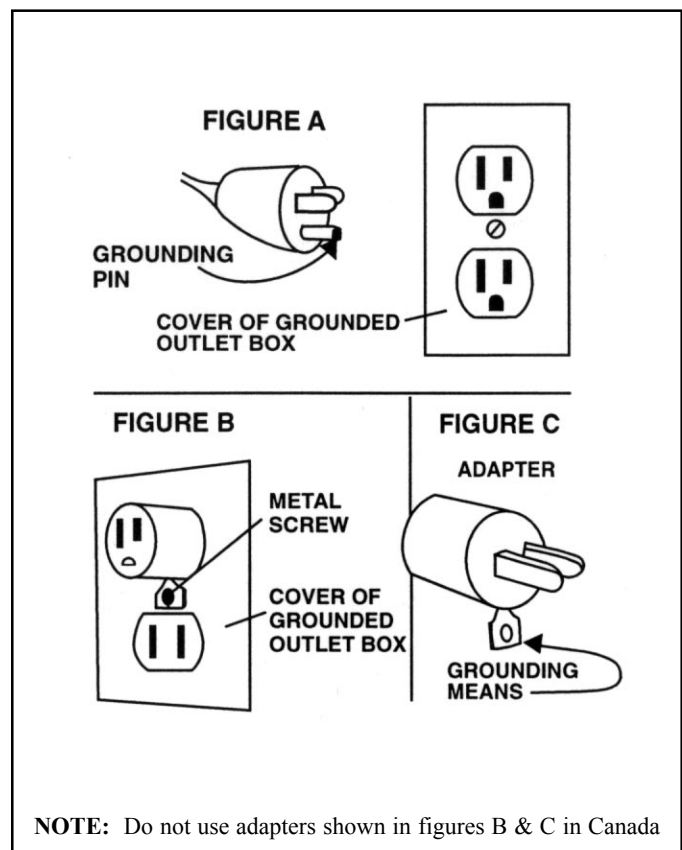
This machine is for use on a nominal 120-volt circuit, and has a grounded plug that looks like the plug illustrated in figure A. A temporary adapter that looks like the adapter illustrated in figures B and C may be used to connect this plug to a 2-pole receptacle as shown in figure B if a properly grounded outlet is not available. The temporary adapter should be used only until a properly grounded outlet (figure A) can be installed by a qualified electrician. The green colored rigid ear, lug, or the like extending from the adapter must be connected to a permanent ground such as a properly grounded outlet box cover. Whenever the adapter is used, it must be held in place by a metal screw.

NOTE: In Canada, the use of a temporary adapter is not permitted by the Canadian Electrical Code

EXTENSION CORDS

Use only three-wire 14/3 or larger gauge approved extension cords that have three-prong grounding type plugs and three-pole receptacles that accept the appliance's plug. Replace or repair any damaged cords or plugs.

When servicing, refer to authorized person only. Use only identical replacement parts.



OPERATING INSTRUCTIONS

WARNING! For the safe operation of this machine follow the instructions given in this booklet and the training given by your supervisor. Failure to do so can result in personal injury and/or damage to machine and property!

DO NOT OPERATE MACHINE IN AN EXPLOSIVE ENVIRONMENT!

NEVER USE THIS MACHINE TO PICK UP VOLATILE OR EXPLOSIVE MATERIALS!

The model shown in this manual is intended for commercial use.

DO NOT OPERATE MACHINE IN AN EXPLOSIVE ENVIRONMENT!

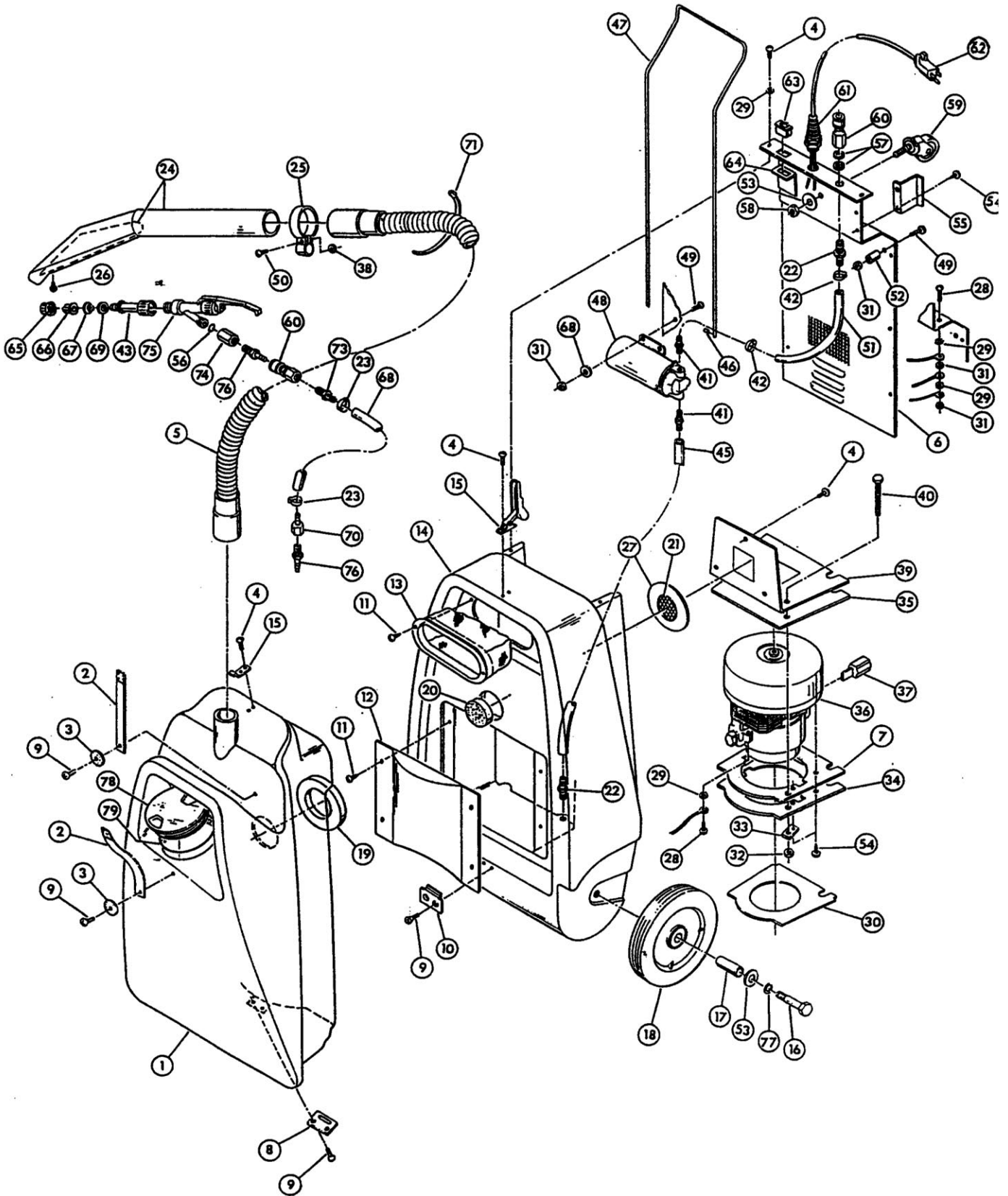
ASSEMBLY & OPERATION

1. This machine separates into two parts. The top half is the recovery tank and the lower portion is the solution tank.
2. To fill the solution tank with water you must first remove the recovery tank: release the clamp located at the front of the machine, then grasp the recovery tank handle and pull slightly forward and up.
3. Looking down at the solution tank, you will see a white filter screen assembly held in place with two screws. Pour up to 2 gallons of water and cleaning chemical through the screen to fill the tank. Powdered chemical must be premixed with water before pouring into the solution tank.
4. To reattach the tanks, place the recovery tank on top of the solution tank. Slide it to the rear so that the male and female latches engage. Then lock the tanks in place by securing the clamp at the front of the machine.
5. Attach the solution hose male quick connect fitting to the brass female fitting located at the center of the power panel at the front of the machine.
6. Attach the vacuum hose to the vacuum inlet port on the recovery tank.
7. Plug the power cord into a grounded wall socket.
8. Turn the machine power switch to the ON position. This will activate the pump and vacuum motors.
9. Place tool head on the surface to be cleaned, squeeze the solution valve lever on the tool assembly to start the flow of cleaning solution. Pull the tool towards you to begin the cleaning process.
10. To transport the machine, slide the metal handle out and raise the front of the machine. Roll it on its' wheels to the next cleaning area. The machine may be transported with solution in the tanks.
11. To empty the recovery tank, unhook the clamp on the front of the machine, grasp the handle on the recovery tank and slide the tank slightly forward and up. Pour the content of the tank into an appropriate drain.
12. Once the cleaning operation has been completed both tanks should be flushed out with water. To empty the solution tank, pump the solution out through the tool or optional drain hose. **DO NOT ATTEMPT TO POUR.**
13. When not in use, wrap the solution and vacuum hoses around the machine body. The power cord should be coiled and secured with the velcro strap on top of the machine to avoid damage.

MAINTENANCE

1. **ALWAYS** turn the machine power switch OFF and **UN-PLUG** the power cord from the electrical outlet before doing any clean up or repairs, also when the machine is left unattended.
2. **White Solution Filter:** This filter assembly is mounted on the solution tank. To clean remove the two mounting screws and lift out. Then flush with warm water to remove debris and reinstall.
3. **Vacuum Filter:** This black sponge like filter is 2 inches in diameter and is mounted on the solution tank directly under the solution filter. To clean flush with warm water. **DO NOT** reinstall until dry.

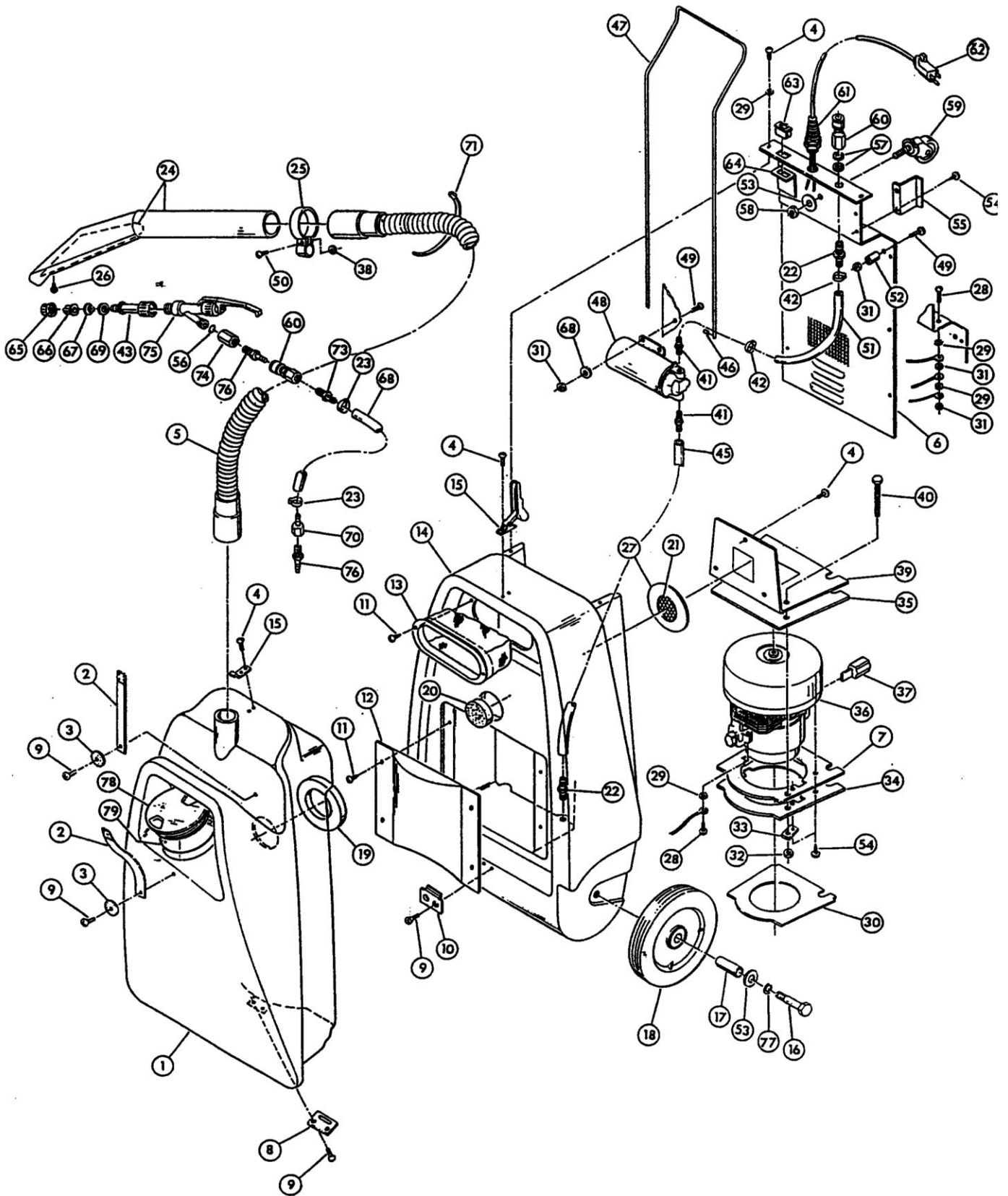
PRO 3



PRO 3 PARTS LIST

| Item | Part Number | Description | Quantity |
|------|-------------|------------------------------------|----------|
| 1 | 228605 | Tank Vacuum - Spotter | 1 |
| 1 | 228606 | Tank Vacuum - Rental Spotter | 1 |
| 2 | 638502 | Strap | 1 |
| 3 | 639401 | Velcro - Pop On Hook | 2 |
| 4 | W356D | 8-32 x 1/4 RHP MS S/S | 17 |
| 5 | 224101 | Hose Vac | 1 |
| 6 | 221901 | Chassis - Pump | 1 |
| 7 | 227602 | Seal - Baffle | 1 |
| 8 | 225101 | Latch - Tank | 1 |
| 9 | 962105 | 8-32 x 3/8 Phil Flt Hd | 6 |
| 10 | 224501 | Hook - Tank | 1 |
| 11 | W136D1 | #8 x 1/2 THP SMS B/O | 6 |
| 12 | 222301 | Cover - Vac Mtr | 1 |
| 13 | 223301 | Filter Asm | 1 |
| 14 | 228604 | Tank Solution | 1 |
| 15 | 222001 | Clamp Machine | 1 |
| 16 | 962103 | 3/8-16 x 2-1/4 Hex Hd Cap | 2 |
| 17 | 208270 | Spacer - Wheel | 2 |
| 18 | 209770 | Wheel 6 Dia. | 2 |
| 19 | 223402 | Gasket - Vac Tank | 1 |
| 20 | 223302 | Filter - Vac | 1 |
| 21 | 228501 | Screen - Filter | 1 |
| 22 | 223309 | Fitting 3/8 Hose to 1/4 Pipe | 2 |
| 23 | 222002 | Clamp 3/8 Hose | 2 |
| 24 | 224502 | Head - Pick Up | 1 |
| 25 | 222004 | Clamp - Valve | 1 |
| 26 | 964058 | Screw - Pick Up Head | 4 |
| 27 | 633401 | Gasket - Bag Mount | 1 |
| 28 | 962030 | Screw - 10 - 32 x 1/2 Type F Pan H | 1 |
| 29 | 980015 | Washer #10 Ext Tooth Shakepr | 5 |
| 30 | 221301 | Baffle - Cooling | 1 |
| 31 | W106D | Nut 10-24 Hex S/S | 2 |
| 32 | 920011 | Nut 1/4-20 Elastic | 4 |
| 33 | 227201 | Retainer - Vac Mtr | 2 |
| 34 | 221302 | Baffle - Vac | 1 |
| 35 | 227601 | Seal - Vac Brkt | 1 |
| 36 | 605210 | Motor - Vac 115V 50/60C | 1 |
| 37 | 600903 | Carbon Brush | 2 |
| 38 | 920623 | Nut - Clamp | 1 |
| 39 | 220804 | Bracket - Vacuum | 1 |
| 40 | W103D | 1/4-20 x 3-1/2 HH CS | 2 |
| 41 | 223308 | Fitting 3/8 Hose to 3/8 Pipe | 2 |
| 42 | 202050 | Clamp - Solution Hose | 4 |

PRO 3



PRO 3 PARTS LIST

| | | | |
|----|--------|----------------------------------|---|
| 43 | 220202 | Adaptor - Tip | 1 |
| 44 | 980036 | Washer - #8 Flat S/S | 4 |
| 45 | 224107 | Hose - Pump to Tank | 1 |
| 46 | W325D | Roll Pin - 1/8 x 5/8 | 2 |
| 47 | 223901 | Handle - Pull | 1 |
| 48 | 3790 | Pump - 115V | 1 |
| | 202701 | Diaphragm Kit | 1 |
| | 209406 | Bypass Valve Kit | 1 |
| 49 | W153D2 | 10-24 x 3/4 PHP MS S/S | 3 |
| 50 | 964059 | Screw - Clamp | 1 |
| 51 | 224108 | Hose - Pump to QD | 1 |
| 52 | 1415 | Spacer | 2 |
| 53 | 980007 | Washer - 5/16 Flat | 2 |
| 54 | 962089 | 10 x 3/4 Type AB PN HD Phil | 8 |
| 55 | 228502 | Support - Hndl | 2 |
| 56 | 227301 | O-Ring | 1 |
| 57 | 980035 | Washer - 9/16 ID Int Tooth Shake | 2 |
| 58 | 920002 | Nut - 3/8-16 Hex | 1 |
| 59 | 519702 | Caster - 3/8-16 x 1.25 Stem | 1 |
| 60 | 222402 | Coupling - QD Tank Female | 2 |
| 61 | A13020 | Relief - Strain - Heyco | 1 |
| 62 | 908062 | Cord Asm 16 - 3x25 ft SJT | 1 |
| 63 | 911089 | Switch - Rocker Spst - 16 AMP | 1 |
| 64 | 224701 | Insulator Switch | 1 |
| 65 | 920622 | Nut - 3/8 Plastic | 1 |
| 66 | 224901 | Jet - Spray | 1 |
| 67 | 223311 | Filter | 1 |
| 68 | 980004 | Washer - 1/4 Flat | 2 |
| 69 | 980618 | Washer - Sealing | 1 |
| 70 | 223310 | Female Connector 1/8 Hose X | 1 |
| 71 | A13066 | Wire Ties | 8 |
| 72 | 222405 | Caddie - Spotter Bottle | 1 |
| 73 | 223307 | Fitting 1/8 Hose x 1/4 NPT | 1 |
| 74 | 220201 | Adaptor | 1 |
| 75 | 229401 | Valve Asm | 1 |
| 76 | 222406 | Coupling - QD Hose Male 1/8 NPT | 2 |
| 77 | 980009 | 3/8 Lock Washer | 2 |
| 78 | 222302 | Cover - Clean Out Rental Spotter | 1 |
| 79 | 223403 | Gasket - cover | 1 |

WARRANTY POLICY PRO 3 Spotter

The **Pacific** Pro 3 has been manufactured, tested and inspected in accordance with specific engineering requirements and is **WARRANTED** to be free from defects in workmanship and materials as follows:

Five (5) years parts, One (1) year labor – Rotational molded tanks.
One (1) year parts & labor – All other components unless excluded below.

This warranty extends to the original user/purchaser and only when used, operated and maintained in accordance with **Pacific's** Operating and Maintenance instructions.

This warranty does not apply to certain wear parts of the machine such as electrical cords, carbon motor brushes, floor brushes, hoses, tools, etc., nor does it apply to damage or failure caused by improper use, abuse or neglect. Warranty credit or replacement of return parts including motors, tools, etc., is subject to incoming inspection of those items.

To secure repair under this warranty, the following procedure should be taken:

- The inoperative machine or warranted parts must be delivered to the authorized dealer with shipping and delivery charges prepaid. If unable to locate the Dealer, you may contact **Pacific** at the address listed herein for the location of the nearest **Pacific** repair center or agent or for other instructions pertaining to your warranty difficulty.
- Upon compliance with the above warranty procedure, all warranted repairs would be completed at no additional charge or cost to the user.
- Only **Pacific** or its authorized dealers and agents may make no charge warranty repairs on this product. All others do so at their own risk.

This warranty limits **Pacific** liability to the repair of the product and/or warranted parts replacement and does not include incidental or consequential damages arising from the use of a **Pacific** machine whether defective or not.

This warranty is in lieu of all other expressed or implied warranties and is extended to the original purchaser/user.



PACIFIC

2259 S. Sheridan • Muskegon, MI 49442
Ph: (231) 773-1330 • (800) 968-1332 • Fax (800) 863-9536
www.pacificfloorcare.com