

ScrubMaster 26C

Parts List

The contents of this manual are based on the latest product information available at the time of publication. Pacific Steamex reserves the right to make changes or improvements to its machines without notice.

For new books write to:

Pacific Steamex, Inc.
2259 S. Sheridan
Muskegon, MI 49442-6252

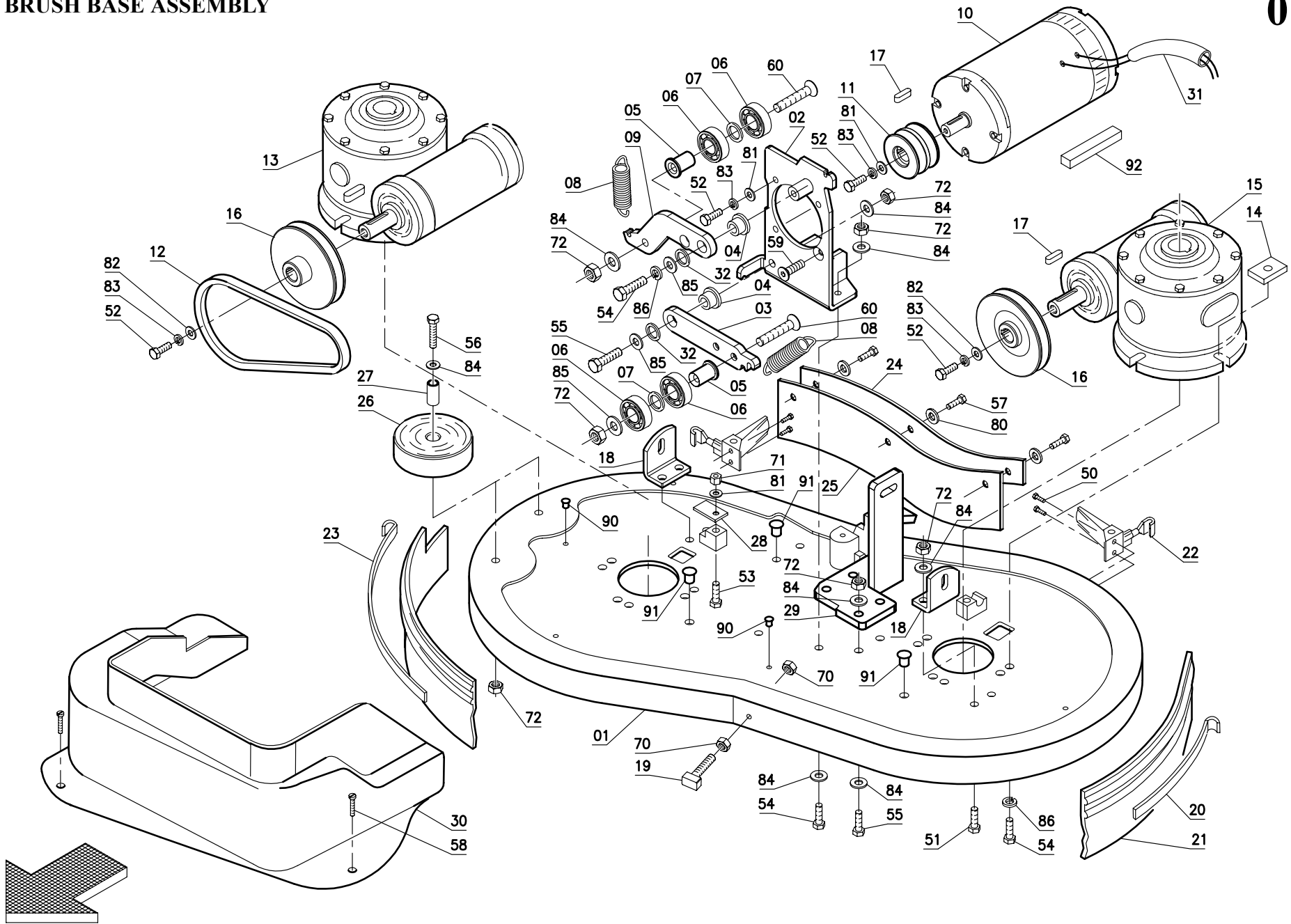
FOR YOUR CONVENIENCE, RECORD THE FOLLOWING INFORMATION:

MODEL _____

SERIAL NUMBER _____

PART NUMBER _____

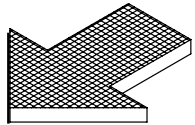
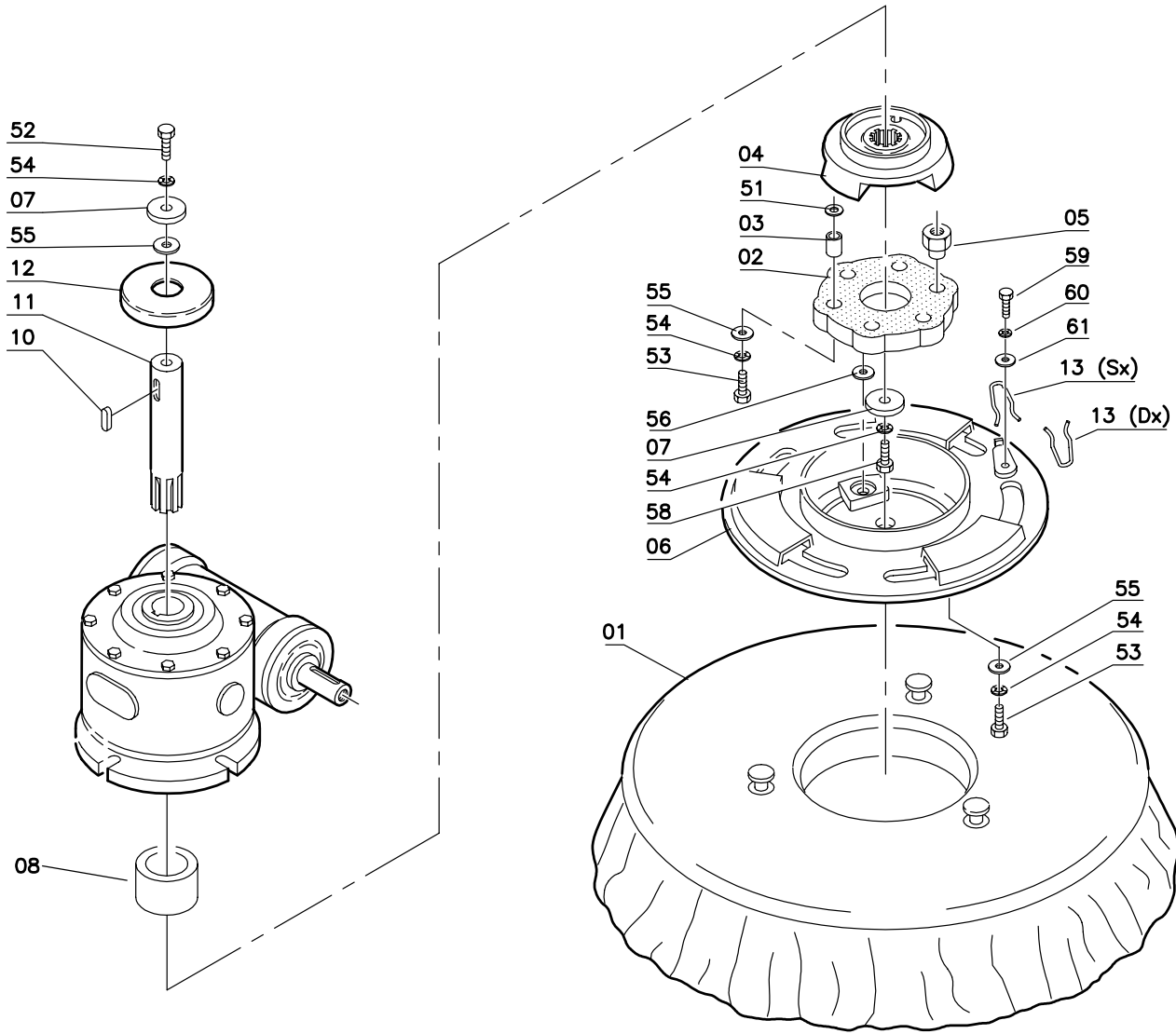
DATE PURCHASED _____



26C - DRAWING 01A

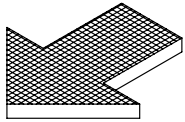
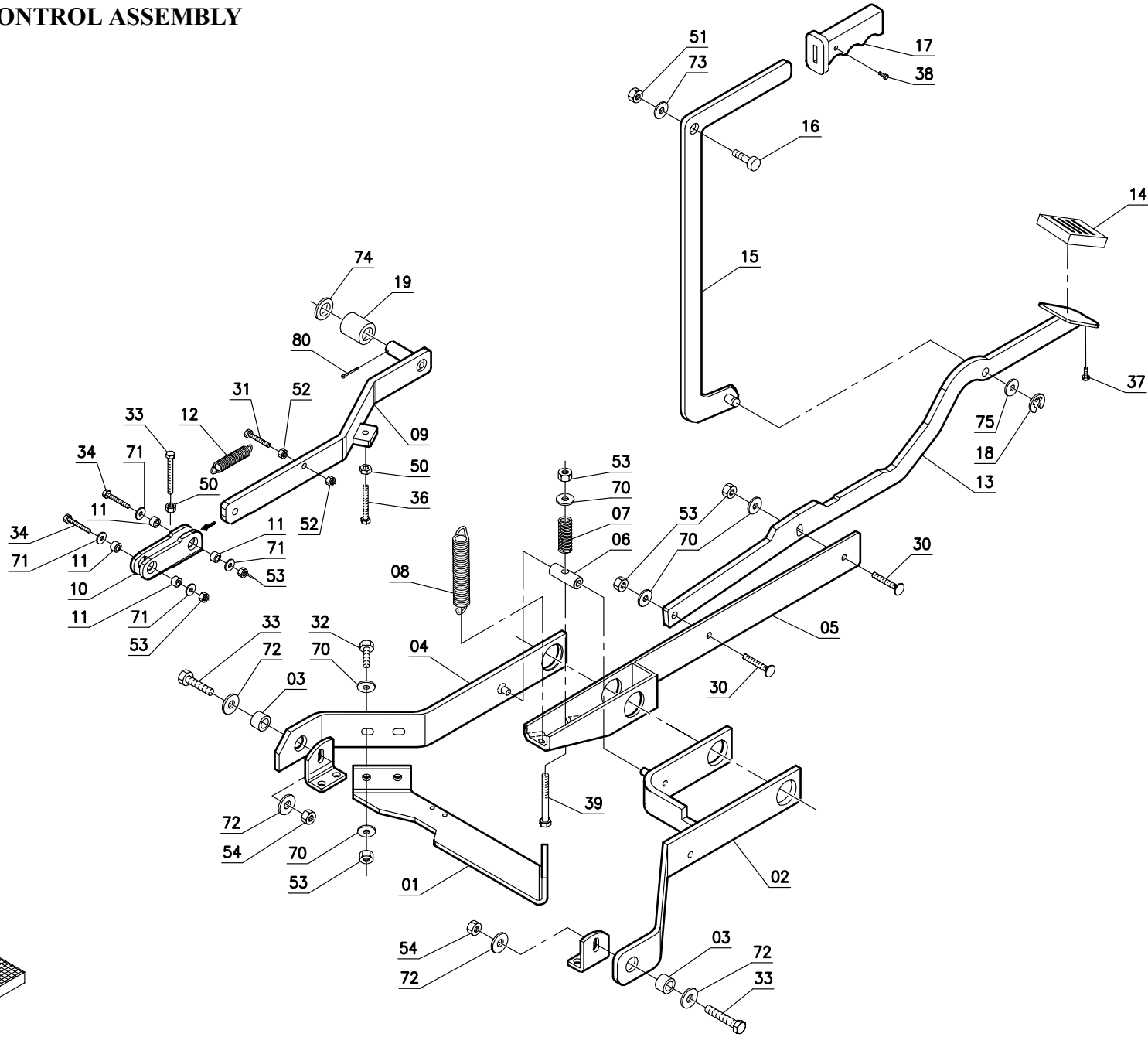
Item	Part Number	Description	Qty.
1	69807020	Brushes Base	1
2	40701310	Motor Support	1
3	40701320	Tightener	1
4	69106020	Bushing	2
5	69106150	Bushing	2
6	70511506	Bearing	4
7	71222002	Shim	2
8	69220540	Spring	2
9	40701330	Tightener	1
10	68220230	Motor	1
11	69410280	Motor Pulley	1
12	70110018	Belt	2
13	68600010	Reduction Gear Assembly	1
14	40301170	Plaque	6
15	68600020	Reduction Gear Inverted	1
16	69410270	Pulley	2
17	70405052	Key	3
18	40701340	Support	2
19	40301120	Screw	1
20	40701180	Blade	1
21	67607040	Splash Guard	1
22	74400002	Hook Assembly	2
23	40701190	Blade	1
24	40701200	Blade	1
25	67607050	Splash Guard	1
26	67020030	Wheel	2
27	69102110	Bushing	2
28	40228500	Blade	2

Item	Part Number	Description	Qty.
29	40703670	Support	1
30	40746200	Base Cover	1
31	67404020	Sheath	1
32	71222001	Shim	2
50	70910412	Screw	4
51	70910806	Screw	4
52	70910610	Screw	5
53	70910616	Screw	2
54	964090	Screw	9
55	70910810	Screw	4
56	964103	Screw	2
57	964133	Screw	3
58	70940604	Screw	3
59	70980602	Screw	2
60	70980812	Screw	2
70	924057	Nut	2
71	924026	Lock Nut	2
72	924033	Lock Nut	14
80	71105002	Washer	3
81	980040	Washer	6
82	71106007	Washer	2
83	71106009	Lock Washer	6
84	980039	Washer	18
85	71108007	Washer	3
86	71108009	Washer	7
90	72913001	Cap	2
91	72913020	Cap	4
92	80930009	Profile	1



26C - DRAWING 02

Item	Part Number	Description	Qty.
1	880970	Brush	2
	885970	Pad Driver	2
2	40301070	Flexible Coupling	2
3	69009010	Spacer	6
4	41201040	Flange	2
5	69102030	Bushing	6
6	41201050	Brush Plate	2
7	40205080	Special Washer	4
8	69006060	Spacer	2
10	70408071	Key	2
11	40701160	Shaft	2
12	40301160	Cap	2
13	69230010	Spring	2
51	980039	Lock Washer	6
52	964090	Screw	2
53	964085	Screw	12
54	980069	Lock Washer	16
55	980044	Washer	14
56	71308004	Washer	6
58	70930801	Screw	2
59	70910602	Screw	2
60	71106009	Lock Washer	2
61	980065	Washer	2



26C - DRAWING 03

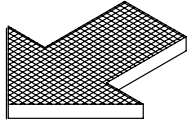
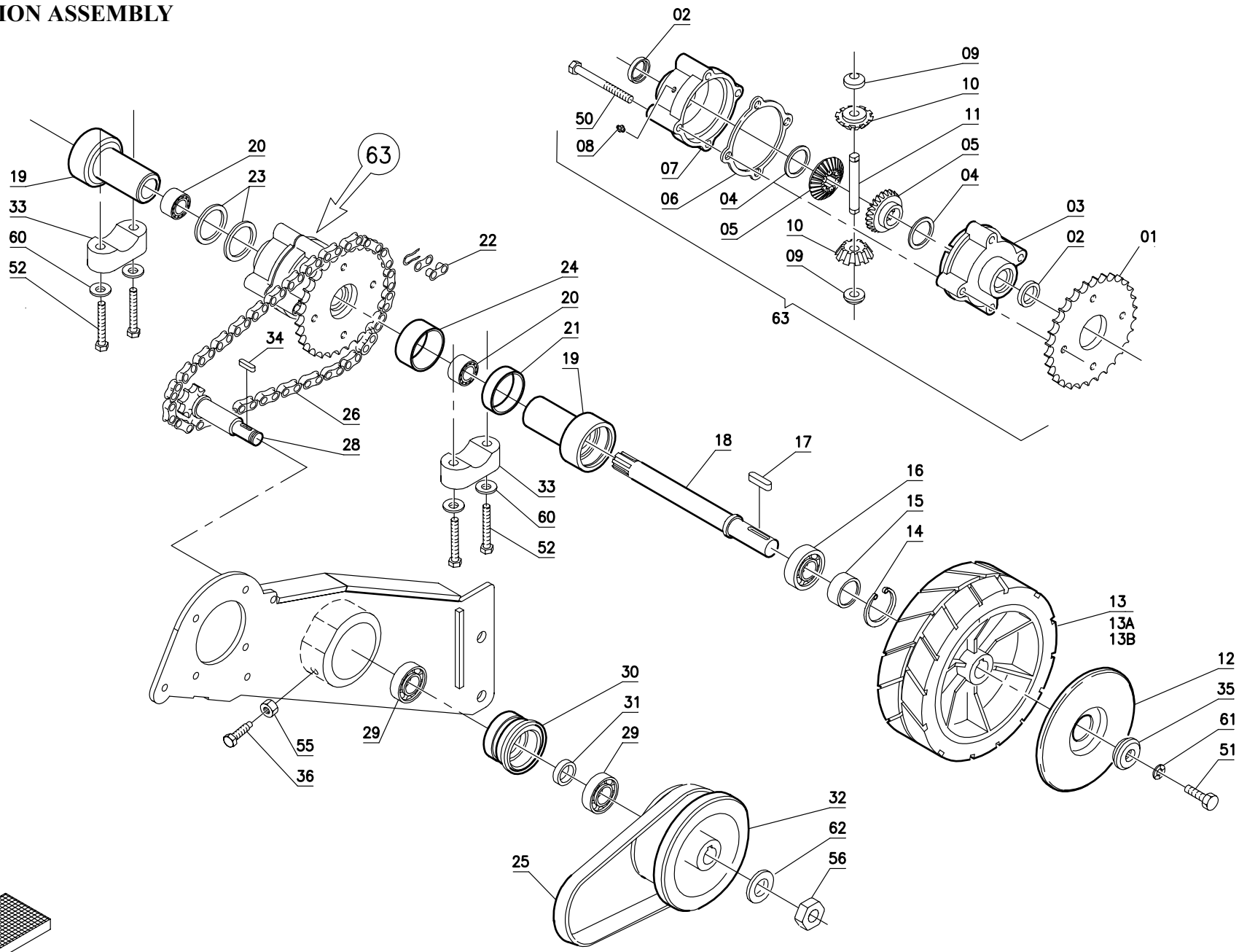
Item	Part Number	Description	Qty.
1	40703500	Bar	1
2	40703680	Left Arm	1
3	69102050	Bushing	2
4	40703690	Right Arm	1
5	40703600	Rocker Arm	1
6	40703060	Bar	1
7	69210450	Spring	1
8	69220530	Spring	1
9	40703650	Arm	1
10	40703660	Joint	1
11	69115020	Bushing	4
12	888350	Spring	1
13	40703700	Pedal	1
14	40212140	Pedal Cover	1
15	40703710	Lever	1
16	40312270	Pin	1
17	74100007	Knob	1
18	70230008	Seeger Ring	1
19	69101020	Bushing	1
30	70900801	Screw	2

Item	Part Number	Description	Qty.
31	964095	Screw	1
32	964090	Screw	4
33	964085	Screw	3
34	964103	Screw	2
36	70910828	Screw	1
37	70920402	Screw	1
38	964133	Screw	1
39	70980811	Screw	1
50	964035	Nut	2
51	924053	Nut	1
52	964063	Nut	2
53	924033	Lock Nut	9
54	71020802	Lock Nut	2
70	980039	Washer	11
71	980044	Washer	4
72	980070	Washer	4
73	71110005	Washer	1
74	71114002	Washer	1
75	980064	Washer	1
80	71525002	Split Pin	1

26C - DRAWING 04

Item	Part Number	Description	Qty.
1	69502020	Handle Bar	1
2	69101030	Bushing	3
3	40728160	Rod	1
4	888350	Spring	1
5	40228020	Rocker Arm	1
6	40228030	Pin	1
7	40728150	Tie Rod	1
8	40728170	Rod	1
9	70540802	Articulation Head	1
10	881145	Bushing	1
11	40730100	Motor Support	1
12	68220240	Motor	1
13	69410300	Motor Pulley	1
14	885030	Key	1
15	40730110	Reinforcement	1
16	40730120	Tightener	1
17	69106020	Bushing	1
18	70511001	Bearing	3
19	71216001	Shim	3
20	69220540	Spring	1
21	71222001	Shim	2
22	40730130	Angle	1
40	964116	Screw	7
41	964079	Screw	2

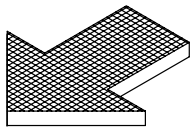
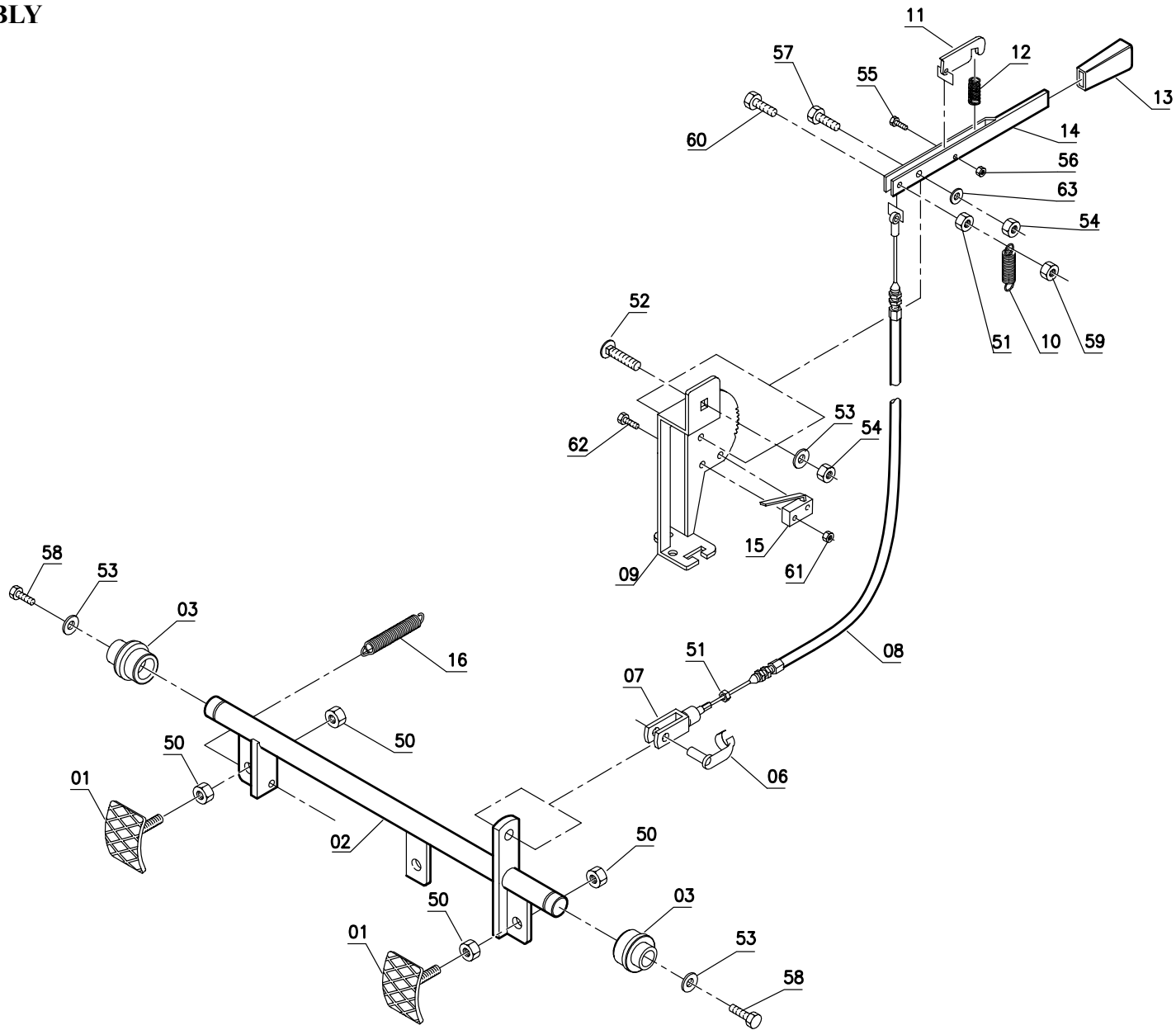
Item	Part Number	Description	Qty.
42	70910627	Screw	1
43	70910806	Screw	1
44	70910813	Screw	1
45	70911006	Screw	2
46	70981007	Screw	1
47	964086	Screw	2
60	924063	Nut	6
61	71010807	Nut	4
62	71010809	Nut	3
63	924026	Lock Nut	2
64	924033	Lock Nut	4
65	71021001	Lock Nut	1
66	924055	Lock Nut	3
80	980040	Washer	8
81	71106009	Lock Washer	5
82	980039	Washer	5
83	980044	Washer	4
84	980064	Washer	6
90	71525002	Split Pin	1
91	74610005	Fork	2
92	74620006	Pin	2
93	74610001	Fork	1
94	74620001	Pin	1



26C - DRAWING 05

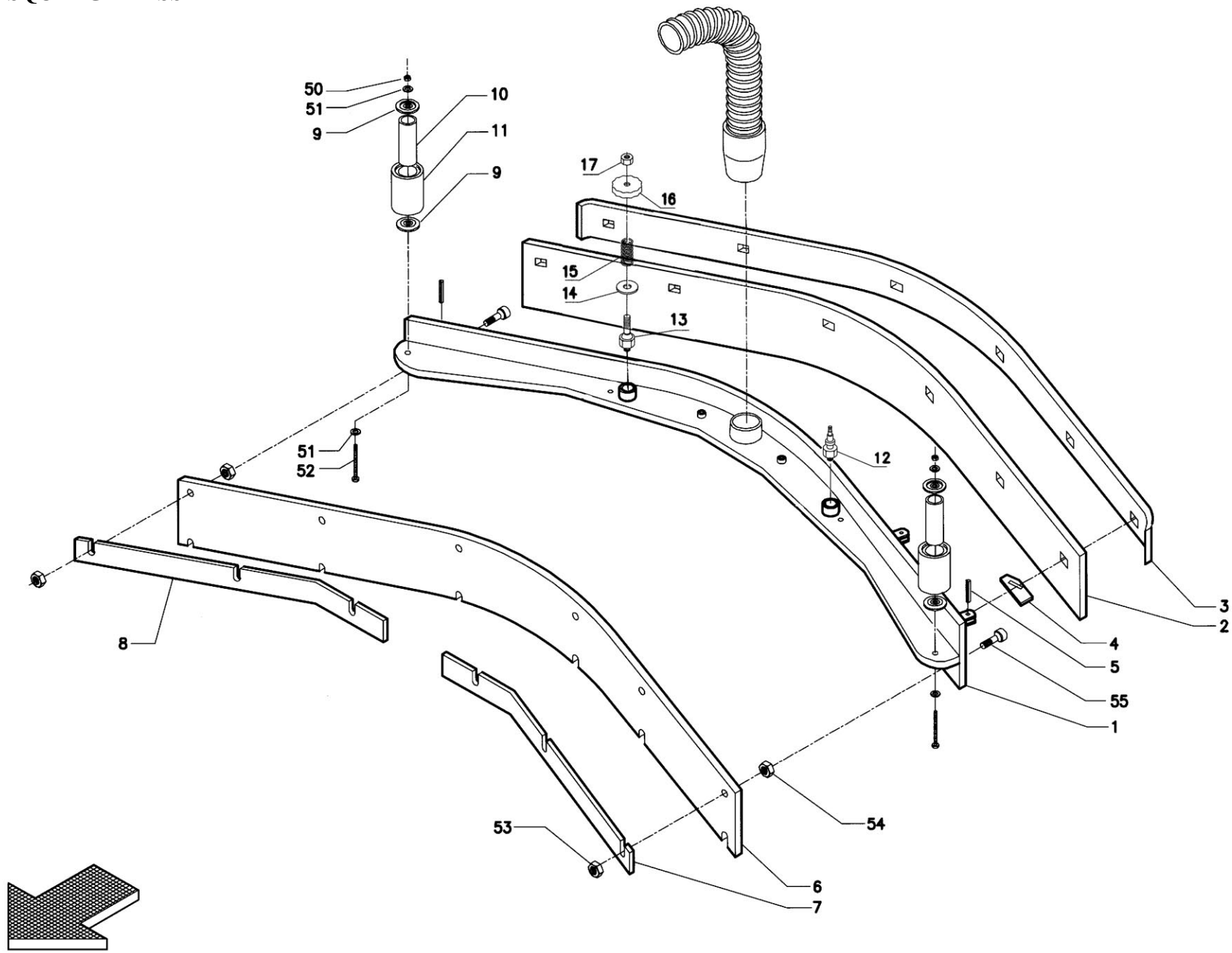
Item	Part Number	Description	Qty.
*1	69330010	Crown Gear	1
*2	887630	Oil Seal	2
*3	40217020	Differential Housing, Right	1
*4	888557	Shim	2
*5	69350020	Crown Wheel	2
*6	67400060	Gasket Differential	1
*7	40217030	Differential Housing, Left	1
*8	74700001	Grease Nipple	1
*9	40217050	Thrust Washer	2
*10	69350010	Plantetary Gear	2
*11	40217060	Pin Planet Wheel	1
12	40217120	Wheel Cover	2
13	67030060	Wheel	2
14	887351	Seeger Ring	2
15	69001170	Spacer	2
16	902033	Bearing	2
17	70406066	Key	2
18	68902020	Axle Shaft	2
19	40217040	Left Support	1
20	70532001	Bearing	2
21	69006100	Spacer	1
22	70300004	Joint Chain	1

Item	Part Number	Description	Qty.
23	69001070	Spacer	2
24	69006110	Spacer	1
25	70120005	Belt	1
26	70300001	Chain	1
28	69310010	Pinion	1
29	70512001	Bearing	2
30	40217100	Eccentric Hub	1
31	69001060	Spacer	1
32	69430190	Pulley	1
33	40216010	Holdfast	2
34	70406062	Key	1
35	40217110	Washer for Wheel	2
36	40217080	Special Screw	1
*50	70910821	Screw	4
51	70930801	Screw	2
52	70910813	Screw	4
55	924035	Nut	1
56	924055	Lock Nut	1
60	980069	Washer	4
61	71308002	Split Washer	2
62	71110005	Washer	1
*63	A1000006	Differential Assembly	



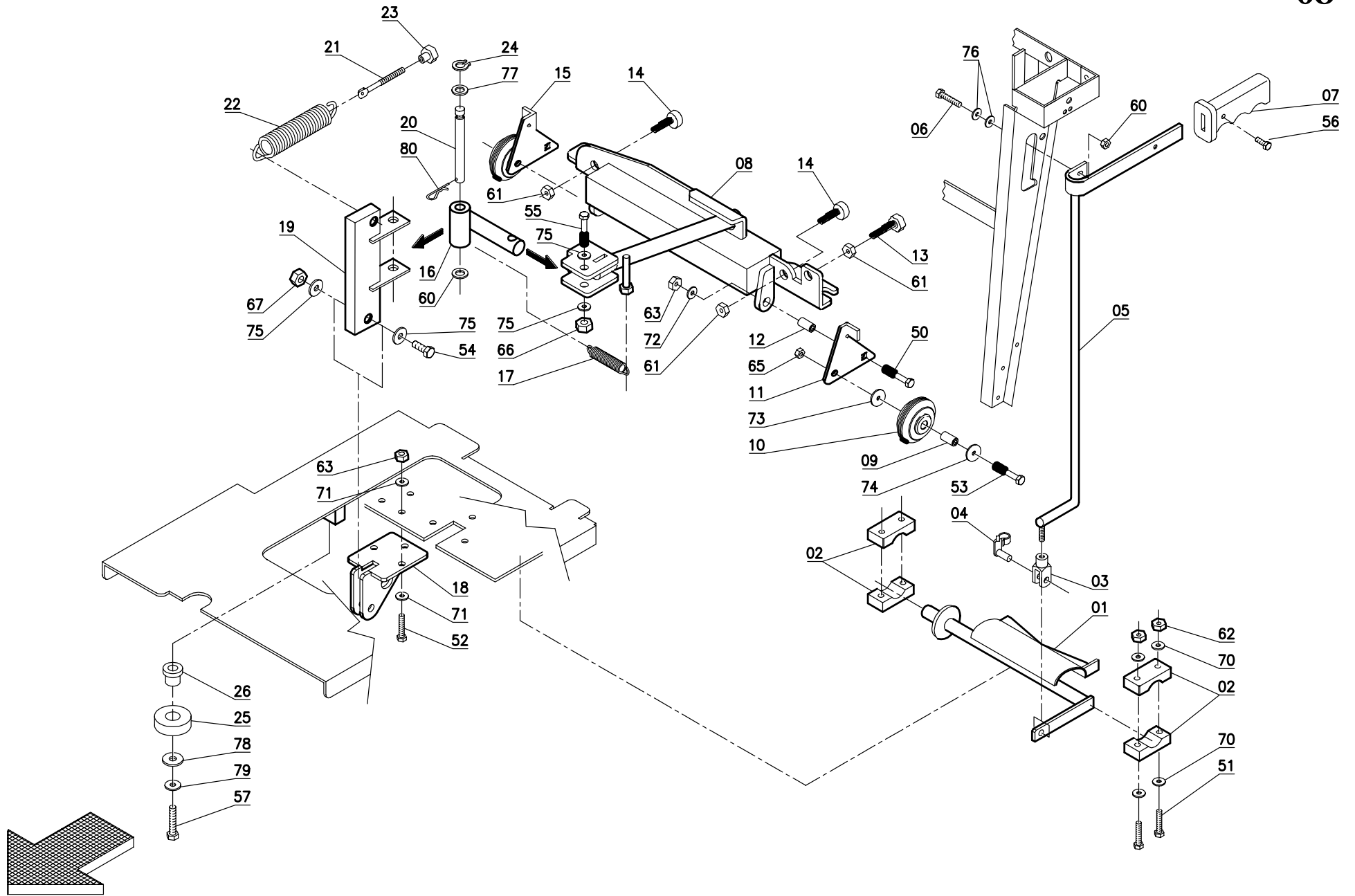
26C - DRAWING 06

Item	Part Number	Description	Qty.
1	40218110	Pad	2
2	40718100	Shaft	1
3	69101190	Bushing	2
6	74620005	Pin	1
7	74610004	Fork	1
8	74803024	Brake Cable	1
9	40218160	Plaque	1
10	888336	Spring	1
11	40318110	Lever	1
12	69210540	Spring	1
13	74100005	Knob	1
14	40318100	Lever	1
15	72105009	Microswitch	1
16	69220240	Spring	1
50	71011202	Nut	4
51	924063	Nut	1
52	70900801	Screw	1
53	980044	Washer	1
54	924033	Lock Nut	2
55	70910407	Screw	1
56	924029	Lock Nut	1
57	70910806	Screw	1
58	70910802	Screw	2
59	924026	Lock Nut	2
60	964083	Screw	1
61	924043	Lock Nut	2
62	964101	Screw	2
63	980039	Washer	1



26C - DRAWING 07

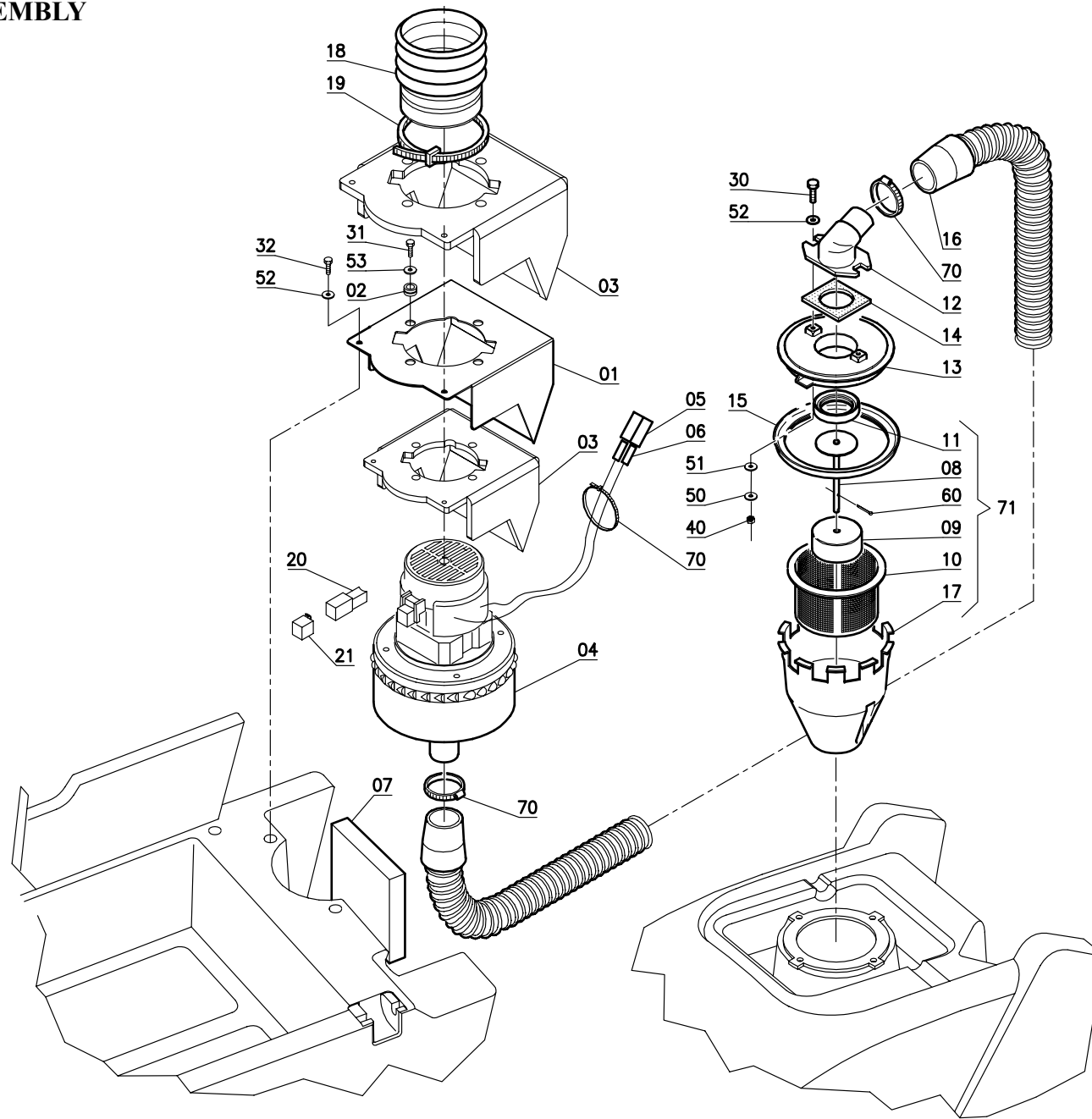
Item	Part Number	Description	Qty.
1	69607060	Squeegee Body	1
2	67707130	Central Rubber 33 Shore	1
2A	67707140	Central Rubber 40 Shore (standard)	1
2B	67707180	Rear Rubber Oil-Resistant	1
3	68807060	Blade	1
4	41811060	Plate	6
5	71405002	Spring Pin	6
6	67707120	Front Rubber	1
7	68807070	Left Blade	1
8	68807050	Right Blade	1
9	40411020	Special Washer	4
10	40411010	Pin	2
11	67020080	Wheel	2
12	40711060	Stud Bolt	1
13	40711050	Stud Bolt	1
14	71108007	Washer	1
15	69210600	Spring	1
16	40212010	Handwheel	1
17	71020803	Lock Nut	1
50	924055	Lock Nut	
51	980064	Washer	
52	70911030	Screw	
53	71020603	Lock Nut: M6	
54	924054	Nut: M6	
55	964110	Screw: M6x25	



26C - DRAWING 08

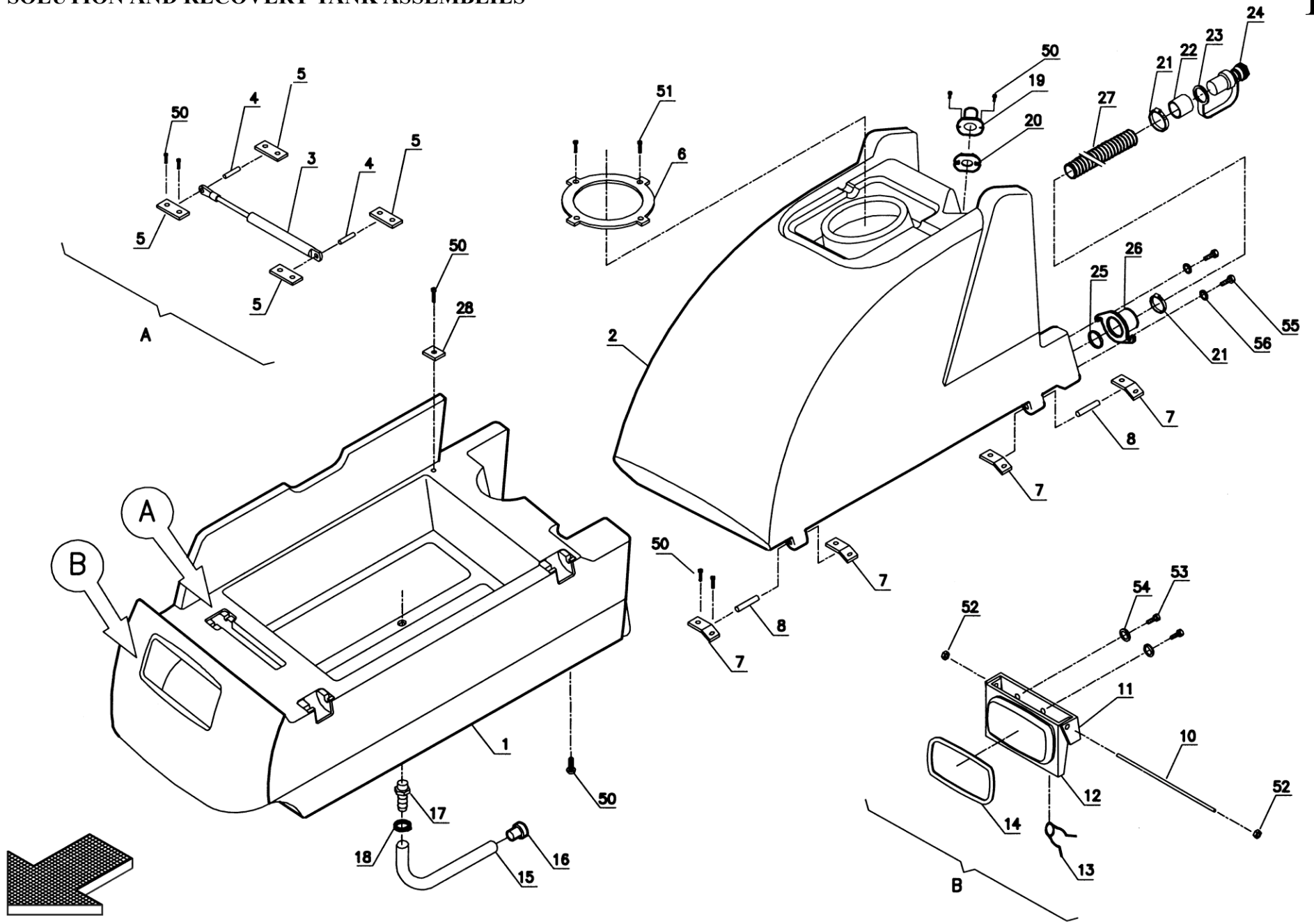
Item	Part Number	Description	Qty.
1	40212260	Pin	1
2	882043	Holdfast	4
3	74610001	Fork	1
4	74620001	Pin	1
5	40212210	Lever	1
6	40312270	Pin	1
7	74100007	Knob	1
8	40712100	Arm	1
9	69101210	Bushing	2
10	67010050	Wheels	2
11	40212180	Support Wheels	1
12	69101220	Bushing	2
13	40312180	Adjuster	2
14	40212200	Adjuster	1
15	40212190	Support Wheels	1
16	40712110	Support	1
17	69220160	Spring	1
18	40716500	Support	1
19	40212250	Lever	1
20	40212270	Spring Pin	1
21	40712120	Tie Rod	1
22	69220530	Spring	1
23	74008002	Knob	1
24	887341	Seeger Ring	1
25	69001180	Idle Wheel	1
26	69109020	Bushing	1

Item	Part Number	Description	Qty.
50	70900801	Screw	2
51	70910622	Screw	4
52	70910806	Screw	3
53	70910816	Screw	2
54	964119	Screw	1
55	70911028	Screw	1
56	964133	Screw	1
57	964085	Screw	1
60	924053	Nut	1
61	71011003	Nut	3
62	924026	Lock Nut	4
63	924033	Lock Nut	5
65	71020804	Lock Nut	2
66	71021001	Lock Nut	1
67	924055	Lock Nut	1
70	980042	Washer	8
71	980039	Washer	6
72	71108006	Cupped Washer	2
73	71108010	Washer	2
74	71108013	Washer	2
75	980064	Washer	4
76	71110005	Washer	2
77	71112005	Washer	2
78	980044	Washer	1
79	980069	Washer	1
80	882130	Clip	1



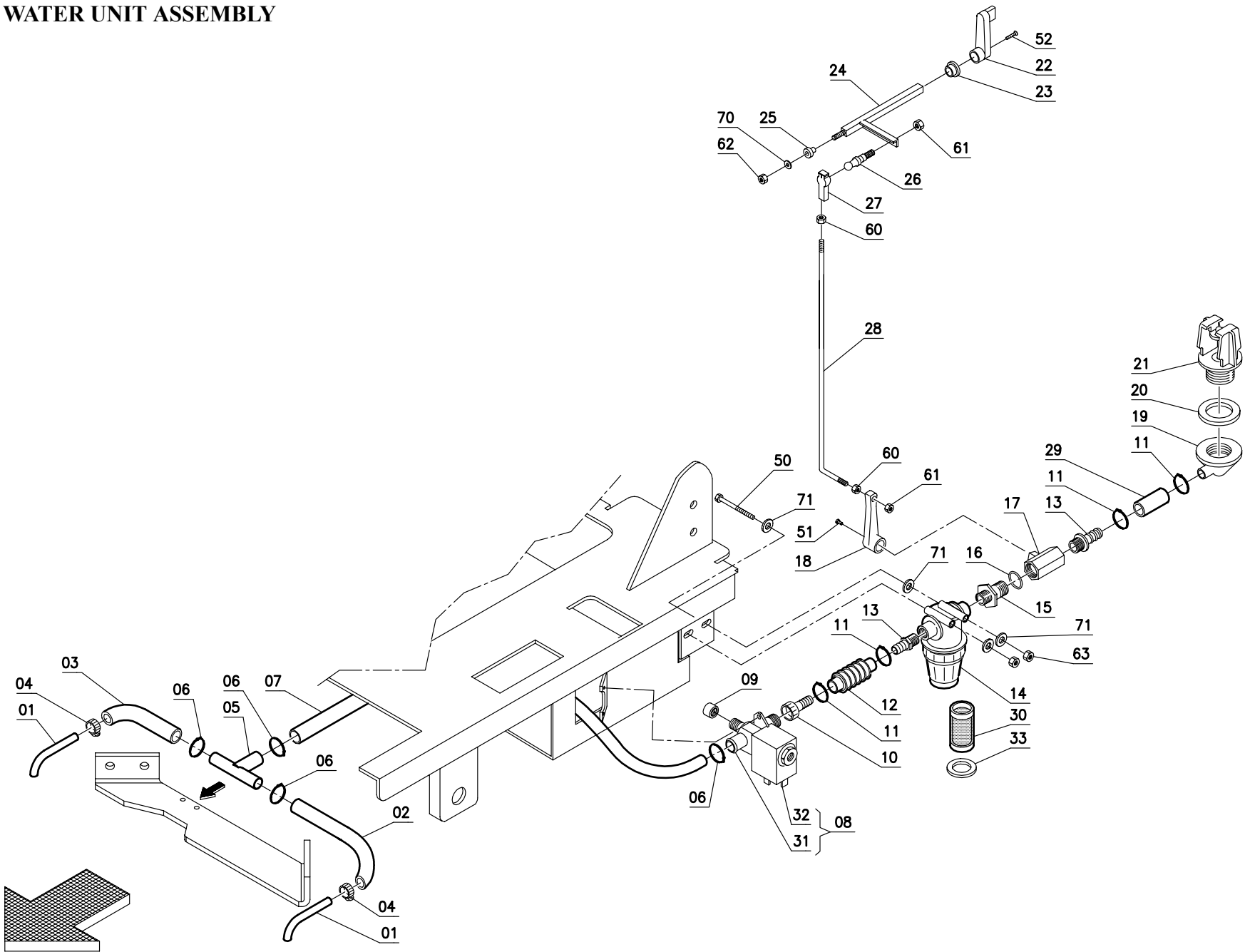
26C - DRAWING 09

Item	Part Number	Description	Qty.
1	40741100	Panel	1
2	883830	Fairlead	4
3	67101460	Deadening	2
4	68120460	Vacuum Mtr w/Load Connection on End	1
5	72700003	Connector	2
6	72700004	Contact	2
7	67101470	Deadening	1
8	40336220	Rod	1
9	883344	Float	1
10	66500010	Filter	1
11	883442	Gasket	1
12	882442	Opening	1
13	886841	Cover	1
14	883446	Gasket	1
15	883441	Gasket	1
16	67512040	Vacuum Hose	1
17	888551	Protection	1
18	67401060	Shroud	1
19	74210003	Clamp	1
20	71708121	Carbon Brush Motor	2
21	72901050	Protection Cap	2
30	964105	Screw	2
31	70944802	Screw	4
32	70944809	Screw	2
40	924029	Lock Nut	2
50	71104002	Washer	2
51	980059	Washer	2
52	980060	Washer	4
53	980040	Washer	4
60	925603	Split Pin	1
70	74210004	Clamp	2



26C - DRAWING 10

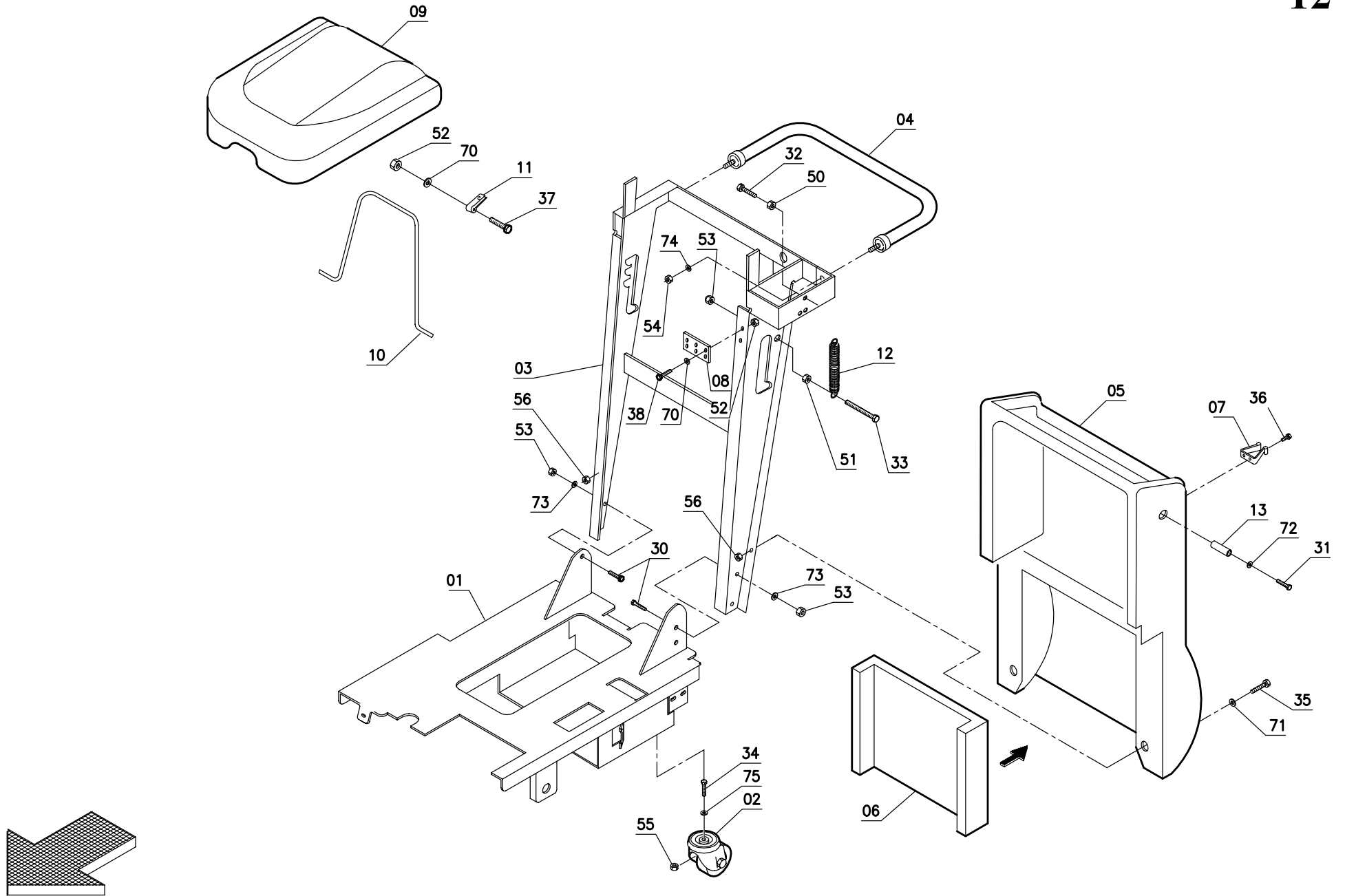
Item	Part Number	Description	Qty.
1	69711010	Solution Tank	1
2	69711020	Recovery Tank	1
3	74809003	Gas Shock Absorber	1
4	40236230	Pin	2
5	40236250	Plaque	4
6	42036030	Flange	1
7	40236260	Plaque	4
8	40236240	Pin	2
10	40236220	Rod	1
11	40236210	Plaque	1
12	40236200	Cover	1
13	69210610	Spring	1
14	67406130	Gasket	1
15	67523720	Pipe	1
16	886852	Cap	1
17	74540002	Connector	1
18	74210001	Clamp	1
19	40741010	Fitting	1
20	883446	Gasket	1
21	74220059	Clamp	1
22	67300080	Pipe	1
23	40741020	Clamp	1
24	41036060	Plug Exhaust Pipe	1
25	70800021	O-Ring	1
26	42336180	Fitting	1
27	67512530	Exhaust Pipe	1
28	72911003	Support Plate	1
50	70945001	Screw	20
51	964063	Screw	4
52	924057	Nut	2
53	964109	Screw	2
54	71106006	Washer	2
55	964060	Screw	2
56	7110813	Washer	2



26C - DRAWING 11

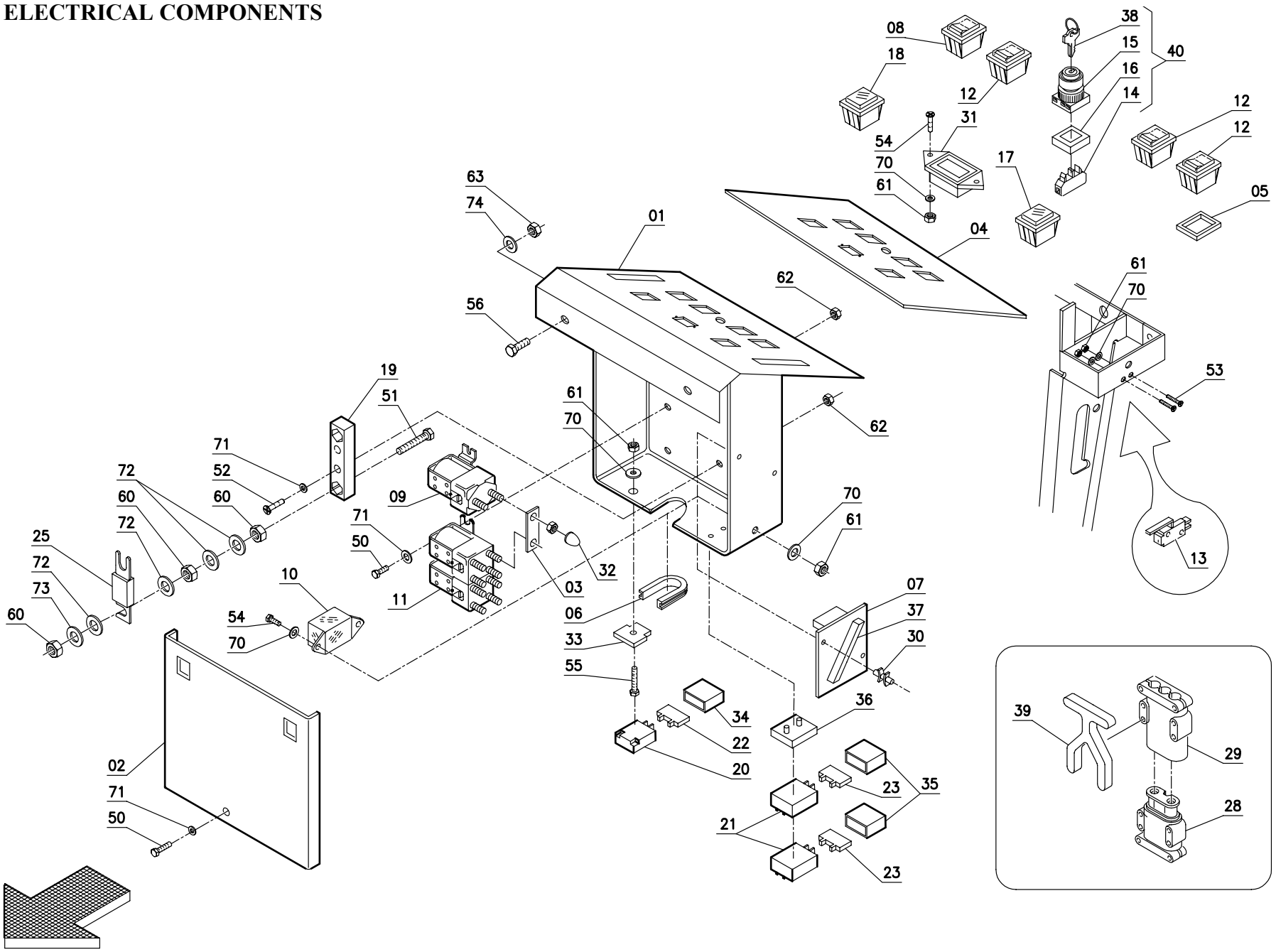
Item	Part Number	Description	Qty.
1	40701170	Pipe	2
2	67523100	Pipe	1
3	67522510	Hose	1
4	74520056	Clamp	2
5	74530003	Pipe	1
6	74210004	Clamp	4
7	67523050	Hose	1
8	68532050	Solenoid Valve	1
9	74550010	Cap	1
10	74540034	Connector	1
11	74210001	Clamp	4
12	40237100	Bellows	1
13	74540035	Connector	2
14	66500490	Filter	1
15	74560022	Nipple	1
16	70800002	O-Ring	1
17	74510001	Valve	1
18	42337020	Lever, Valve	1
19	74520025	Ring Nut	1
20	70800003	O-Ring	1
21	883332	Base	1

Item	Part Number	Description	Qty.
22	40736180	Lever, Valve	1
23	69102280	Bushing	1
24	40337060	Lever, Valve	1
25	69101060	Bushing	1
26	74400013	Pin	1
27	74400007	Adjustable Head	1
28	40237080	Rod	1
29	67523380	Hose	1
30	66500500	Filter Cartridge	1
31	68510090	Solenoid Valve Body	1
32	68522070	Coil	1
33	67406160	O-Ring	1
50	964108	Screw	2
51	964127	Screw	1
52	964133	Screw	1
60	964046	Nut	2
61	924032	Lock Nut	2
62	924026	Lock Nut	1
63	924033	Lock Nut	2
70	980042	Washer	1
71	980039	Washer	5



26C - DRAWING 12

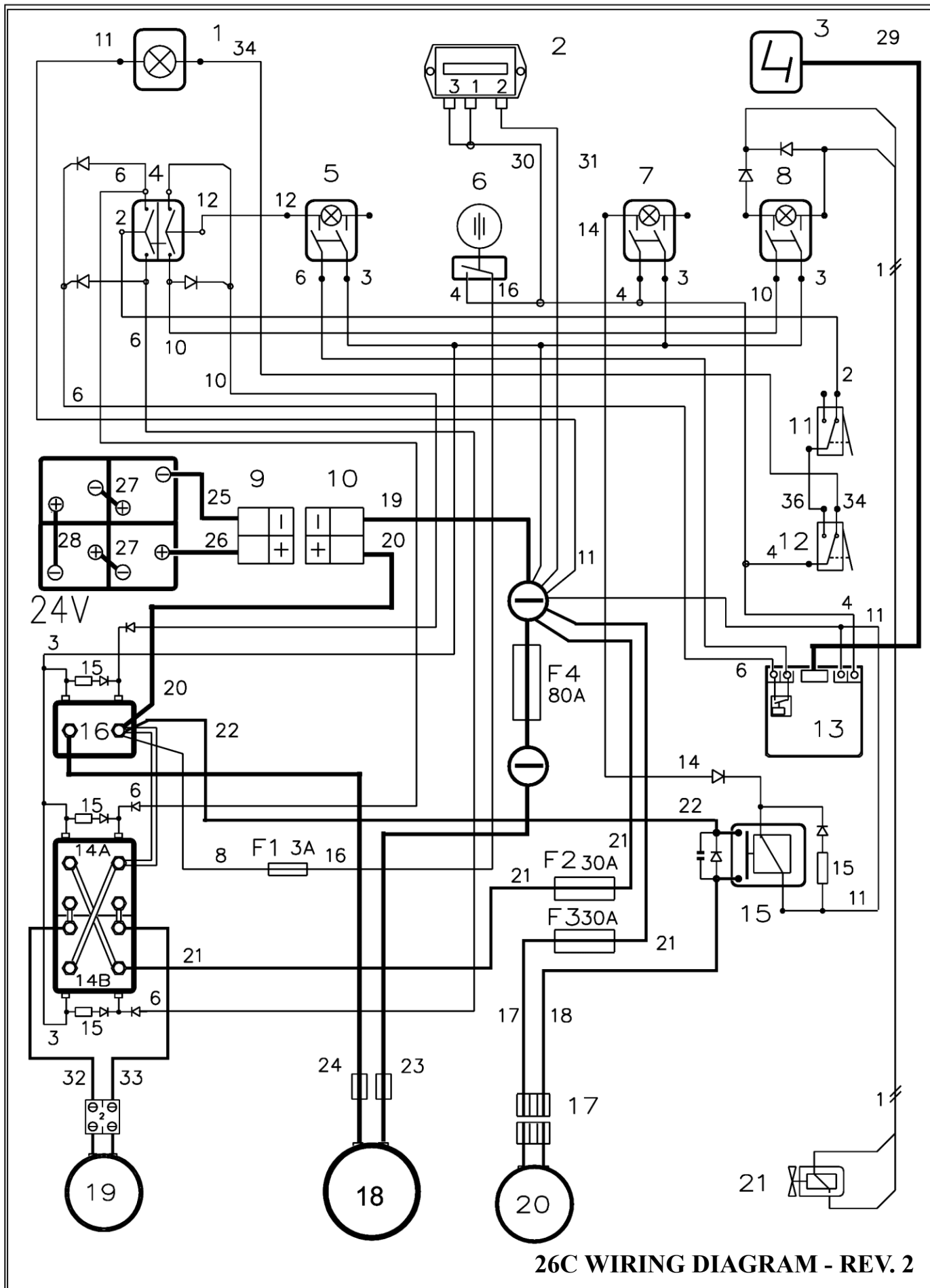
Item	Part Number	Description	Qty.
1	69902100	Frame	1
2	67050110	Castor Wheel	2
3	69902200	Rear Frame	1
4	40247040	Handle Bar	1
5	40746210	Cover	1
6	67101450	Deadening	1
7	882440	Hook	1
8	40251050	Support	1
9	40246240	Bonnet	1
10	40246270	Cover Hinge	1
11	72902011	Cable Fastener	2
12	888350	Spring	1
30	70900801	Screw	4
31	70910620	Screw	2
32	964083	Screw	1
33	70910821	Screw	1
34	70911202	Screw	2
35	70930501	Screw	2
36	70944201	Screw	2
37	70950401	Screw	2
38	70950405	Screw	2
50	924048	Nut	1
51	71010807	Nut	1
52	924029	Lock Nut	4
53	924033	Lock Nut	5
54	924055	Lock Nut	2
55	71021202	Lock Nut	2
56	71050503	Nut	2
70	71104002	Washer	4
71	980060	Washer	2
72	980040	Washer	2
73	980044	Washer	4
74	71110012	Washer	2
75	980046	Washer	2



26C - DRAWING 13

Item	Part Number	Description	Qty.
1	40251030	Box	1
2	40251040	Cover	1
3	41251090	Bridge	1
4	66401335	Decal	1
5	883440	Gasket	6
6	67402220	Gasket	1
7	67903001	Check Card Batteries	1
8	68301010	Switch	1
9	68420120	Remote Control Switch	1
10	887550	Relay	1
11	68420610	Remote Control Switch	1
12	911172	Switch	3
13	72105009	Microswitch	1
14	72107005	Contact	1
15	72199015	Switch with Key	1
16	72199018	Flange	1
17	72300117	Battery Warning Light	1
18	72300119	Battery Warning Light	1
19	72400008	Fuseholder	1
20	72400011	Fuseholder	1
21	72400012	Fuseholder	2
22	72400301	Fuse	1
23	72403003	Fuse	2
25	72408001	Fuse	1
28	72700013	Connector, Female	1
29	72700014	Connector, Male	1
30	72903009	Coupler	2

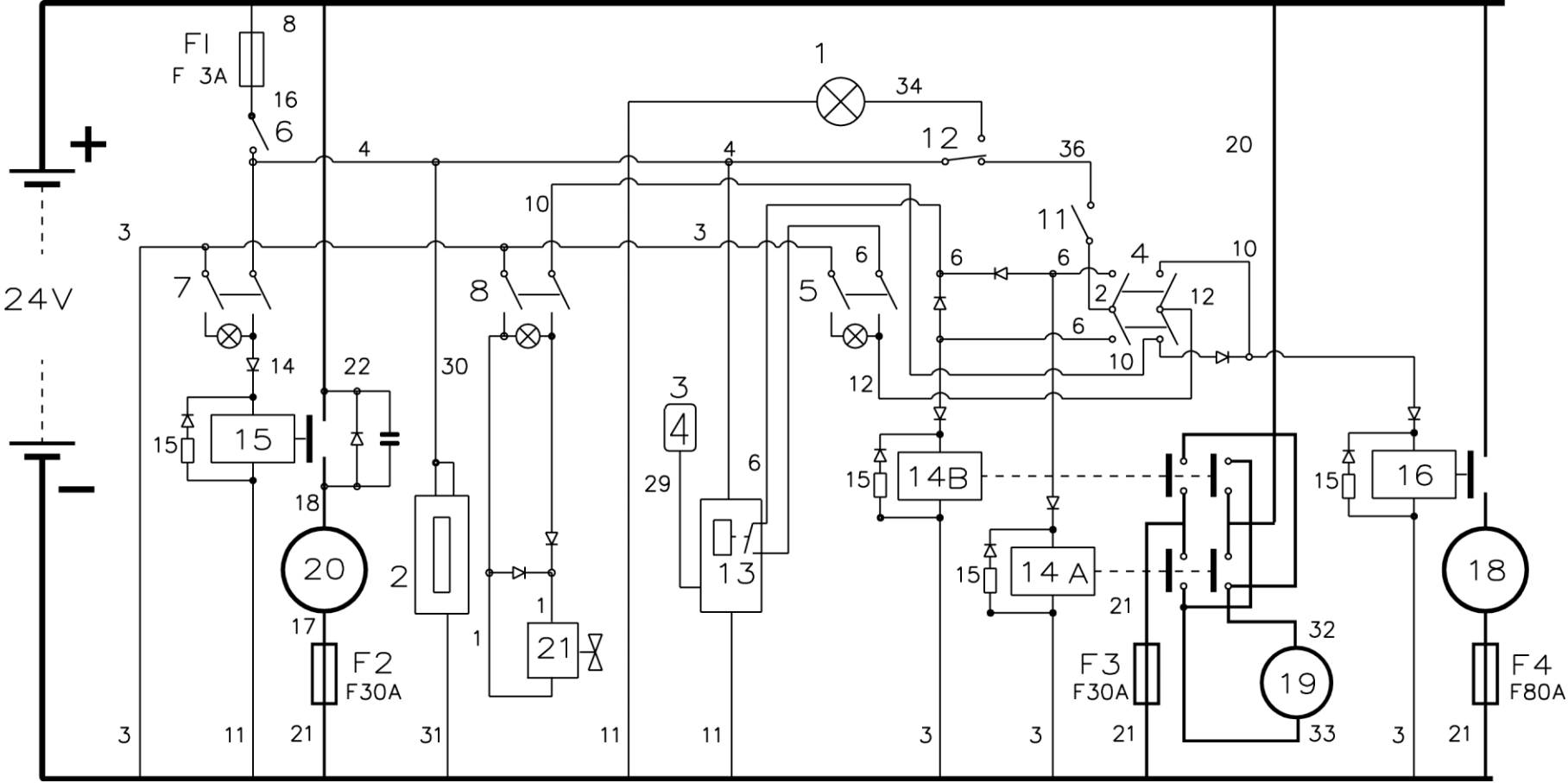
Item	Part Number	Description	Qty.
31	72904002	Hour Meter	1
32	72913006	Cover	8
33	72916001	Plaque	1
34	72916002	Cover	1
35	72916003	Cover	2
36	72916004	Plaque	1
37	80930003	Profile	1
38	72908017	Key	1
39	72700015	Lever for Connector	1
40	72199017	Switch	1
50	70910401	Screw	4
51	964106	Screw	2
52	70920406	Screw	2
53	964101	Screw	2
54	70940307	Screw	3
55	70970301	Screw	1
56	964116	Screw	2
60	71010805	Nut Brass	7
61	964043	Lock Nut	6
62	964029	Lock Nut	6
63	924026	Lock Nut	2
70	980054	Washer	6
71	980057	Washer	6
72	71108004	Washer	12
73	980053	Lock Washer	2
74	980042	Washer	2



26C WIRING DIAGRAM - REV. 2

FUNCTIONAL SCHEMATIC

26C



ELECTRICAL COMPONENTS

Item	Part Number	Description
1	72300119	Indicator Lamp Red Handbrake
2	72904002	Hourmeter Digital (Optional)
3	72300117	Indicator Battery Control
4	68301010	Drive Commutator
5	911172	Bipolar Switch Green 24V Brush Motor
6	72107005	Contact Key On/Off
7	911172	Bipolar Switch Green Vacuum Motor
8	911172	Bipolar Switch Green 24V Solenoid Valve
9	72700013	Female Connector 80A
10	72700014	Male Connector 80A
11	72105009	Microswitch
12	72105009	Microswitch
13	67903001	Batteries Check Card
14A	68420610	Remote Control Switch Double Forward
14B	68420610	Remote Control Switch Double Backward
15	887550	Relay 24V 30A Vacuum Motor
16	68420120	Remote Control Switch Brush Motor
17	72700007	Double Connector 30A Vac Motor
18	68220230	Brush Motor 24V 750W
19	68220240	Traction Motor 24V 250W
20A	68120460	Vacuum Motor 24V
21	68522070	Coil Solenoid Valve 24V 1/2 ACL
F1	72400301	Fuse 3A Faston General Key
F2	72403001	Fuse 30A Faston Traction Motor
F3	72403001	Fuse 30A Faston Vacuum Motor
F4	72408001	Fuse 80A Brush Motor

CABLES

Item	Part Number	Description
1	68007021	2 Cables Blue-Brown with Diodes -1-
2	68007022	Cable Red -2-
3	68007023	6 Cables Black -3-
4	68007024	3 Cables Red -4-
6	68007025	4 Cables Red-Green with Diodes -6-
8	68007033	Cable Red -8-
10	68007026	2 Cables Blue-Red with Diodes -10-
11	68007027	3 Cables Black -11-
12	68007028	Cable Red -12-
14	68002022	Cable Red with Diode -14-
15	72500011	Diode and Resistances with Terminal
16	68002023	Cable -16-
17/18	68002027	Cables Black-Red + Conn. 30A -17/18-
19/20	68007011	Cables Black-Red + Conn. 80A -19/20-
21	68007029	Cable Black -21-
22	68007012	Cable Red with Diode and Condenser -22-
23/24	68007017	Cables Black-Red -23/24-
25/26	68007016	Cable Black-Red+Battery Terminals -25/26-
27	68000153	Cable Black Battery Bridge-27-OPTIONAL
28	68000154	Cable Black Battery Bridge-28-OPTIONAL
29	68000892	Cable Display Battery Signal
30	68007013	Cable Red with Bridge -30- OPTIONAL
31	68007014	Cable Black -31- OPTIONAL
32/33	68007030	2 Cables Red-Black with Terminal -32/33-
34	68007031	Cable Red -34-
36	68007032	Cable Red -36-

WARRANTY POLICY
PACIFIC STEAMEX INC. LIMITED WARRANTY

The **Pacific Steamex Inc.** ScrubMaster has been manufactured, tested and inspected in accordance with specific engineering requirements. This machine is **WARRANTED** to be free from defects in workmanship and materials for periods as follows from the date of purchase.

Ten (10) Years Parts, One (1) Year Labor – Polyethylene Components
Five (5) Years Parts, One (1) Year Labor – Main Frame
Two (2) Years Parts, One (1) Year Labor – Brush Drive Motors
One (1) Year Parts & Labor – All other components unless excluded below

Travel time for warranty repair is authorized for a period of ninety (90) days following the date of sale to the end user, with a maximum of three (3) hours per claim.

This warranty extends to the original user/purchaser and only when used, operated and maintained in accordance with **Pacific Steamex Inc.** Operating and Maintenance instructions.

This warranty does not apply to certain wear parts and accessories of the machine such as electrical cords, carbon motor brushes, floor brushes, belts, hoses, tools, squeegee blades, etc., nor does it apply to damage or failure caused by improper use, abuse or neglect. Warranty credit or replacement of return parts including motors, pumps, etc., is subject to incoming inspection of those items.

To secure repair under this warranty, the following procedure should be taken:

1. After the expiration of the ninety (90) day travel time warranty period, the customer is responsible for warranty travel payment or the inoperative machine or warranted parts must be delivered to the authorized dealer with shipping and delivery charges prepaid. If unable to locate the Dealer, you may contact **Pacific Steamex Inc.** at the address listed herein for the location of the nearest **Pacific Steamex Inc.** repair center or agent or for other instructions pertaining to your warranty difficulty.
2. Upon compliance with the above warranty procedure, all warranted repairs will be completed at no additional charge or cost to the user.
3. Only **Pacific Steamex Inc.** or its authorized dealers and agents may make no charge warranty repairs on this product. All others do so at their own risk.

This warranty limits **Pacific Steamex Inc.** liability to the repair of the product and/or warranted parts replacement and does not include incidental or consequential damages arising from the use of a **Pacific Steamex Inc.** machine whether defective or not.

BATTERY WARRANTY

In addition to the terms above, any original equipment Pacific Steamex Battery which becomes unserviceable under normal use within a period of ninety (90) days from date of sale to the original user will be repaired or replaced with one of equal specification at our option, F.O.B. any authorized Pacific Steamex Sales or Service Branch, with no charge to user, except transportation costs. After the expiration of the above ninety (90) day period, any battery which fails under normal use will be adjusted to the original user with a new battery of equal specification on a twelve (12) month pro rata basis from the date of purchase. Adjustment will be determined using the then current list price, plus transportation costs. Warranty is rendered null and void if battery is not kept filled to the proper level with DISTILLED WATER.

This warranty is in lieu of all other expressed or implied warranties and is extended to the original purchaser/user.

PACIFIC STEAMEX, INC.
2259 S. SHERIDAN
MUSKEGON, MICHIGAN 49442-6252
1-800-968-1332
FAX 1-800-863-9536